

# Learner-Centered Classrooms

## Engaged & Ready to Succeed

*Furniture Lookbook  
& Thought Starters*

**Waldner's**  
Furniture. Technology. Service.

**WOMEN  
OWNED**  
CERTIFIED BY WOMEN'S BUSINESS ENTERPRISE  
NATIONAL COUNCIL



**Steelcase®**  
LEARNING









# Table of Contents

- 01 Corporate Overview**  
One trusted partner from concept to completion
- 02 Project Process**  
Provides unmatched knowledge and expertise of project execution
- 03 Design Capabilities**  
Helping bring your design concepts to reality
- 04 Learner-Centered Classrooms**  
Research, applications, and product solutions



# *Getting to know Waldner's*

One Team. One Process. Endless Possibilities.

**Waldner's**  
Furniture. Technology. Service.

**WOMEN  
OWNED**  
CERTIFIED BY | WOMEN'S BUSINESS ENTERPRISE  
NATIONAL COUNCIL





## Our Purpose

We help create **smarter spaces** where **people thrive** and **businesses grow**, through **bold ideas**, **thoughtful collaboration**, and **end-to-end solutions** that make Waldner's your ***one trusted partner from concept to completion.***

## Our Strengths

Women-Owned  
& Family Operated

Steelcase 2024  
Premier Partner

300+ Manufacturers  
Represented

1939 Company  
Established

\$200 Million Annual  
Revenue (fiscal 2024)

Comprehensive  
In-House Services

## Our Capabilities



**Complete Workplace Solutions**  
*Furniture, Architecture & Technology*



**Dedicated Account Team**  
*Begin With The End In Mind*



**Workplace Design**  
*Customized Design Experience*



**Project Management & Workplace Services**  
*Execute Concept to Reality*



**Project Closeout & Continued Support**  
*Seamless wrap-up, lasting support*



# Trusted + Proven Network

Waldner's commitment goes beyond a transaction. We're here to **create a great experience from start to finish** providing in-depth research, quality products and reliable service.

## Expertise

Committed Partners  
Industry Leadership  
Community Roots

## Ease

Broad Network  
Seamless Integration  
Better Solutions

## Experience

Reliability + Stability  
Dedicated to Quality  
A Force for Good



2024

P R E M I E R  
P A R T N E R

Steelcase



There are **250+ Steelcase Dealers** located throughout the U.S. **Waldner's passion for unrivaled customer service** and the dedication to our commitment and mission is reflected in the market as we **continually outperform competitors** in our industry.

Waldner's Ranks **amongst top Steelcase Dealers** in the U.S.

Waldner's Performance Assessment is evaluated along these four categories:

### 1. Market Leadership:

Incorporates Market Share and 3-year average growth.

### 2. Better Together:

Incorporates the Net Promoter Score, Partnership Strength, Co-Marketing initiatives.

### 3. Fitness:

Incorporates new business development, Net Profit Before Tax.

### 4. Diversification:

Across product categories: Learning, Health, Architectural, Work tools, Ancillary.

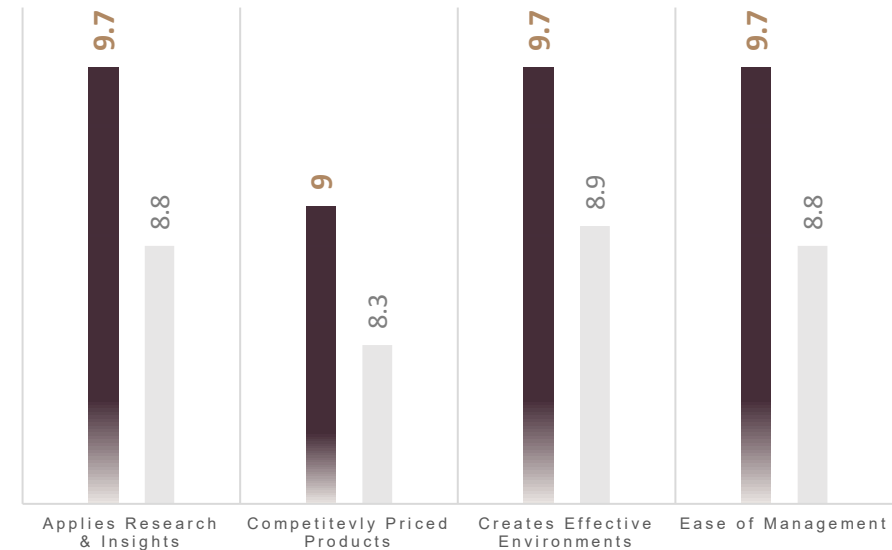


# Waldner's Customer Experience Feedback

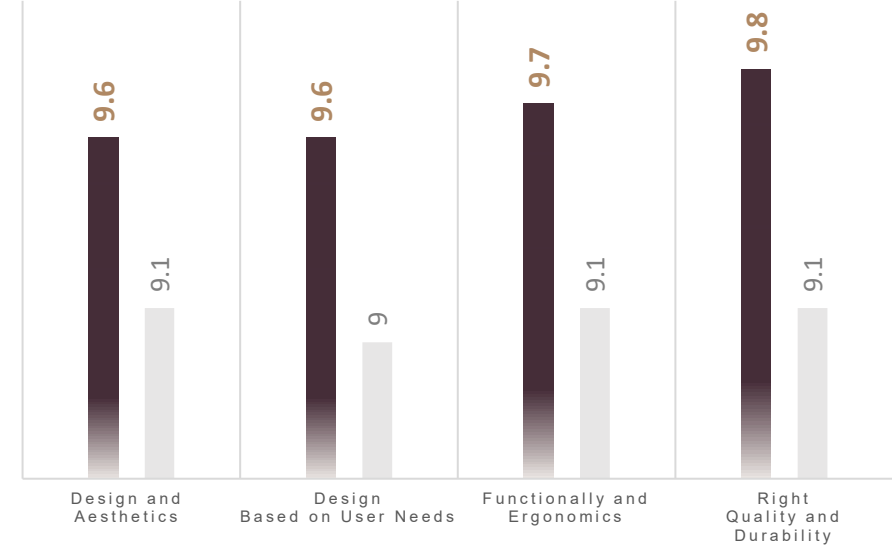
Waldner's is proud to report exceptional feedback from our valued clients. We are excited for the next year of growth and improvements to enhance our customer experience further.



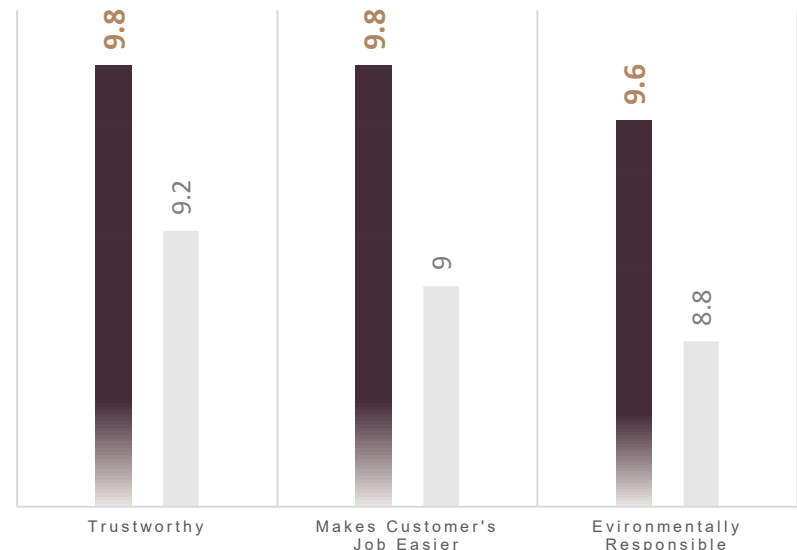
## Solutions



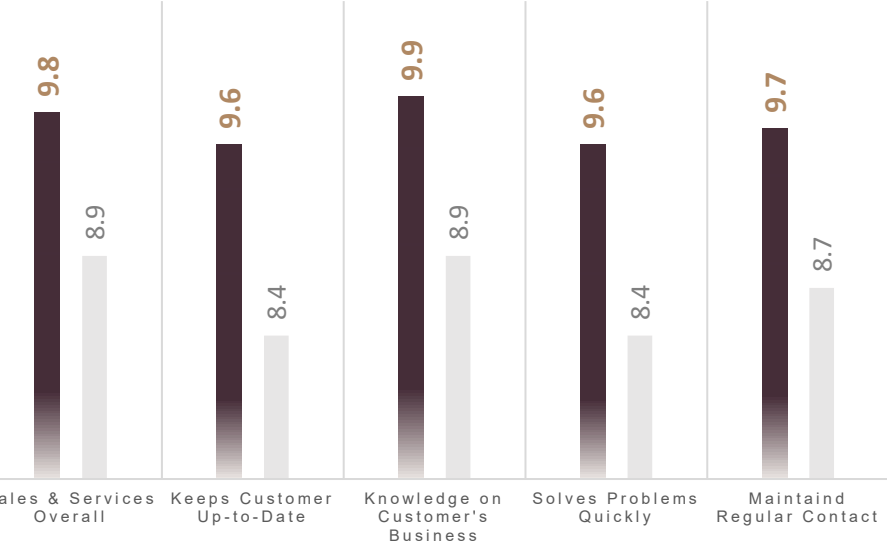
## Product Benefit



## Company Reputation



## Sales & Services



How likely are you to recommend our dealership?



9.0  
Average Dealer Response

Overall, how satisfied are you with us?



9.0  
Average Dealer Response

**Steelcase**  
Premier Partner

## What our Client's are saying:

“ Waldner's is so helpful and make the project process so easy and seamless that we have time to have fun with the spaces. **Results are always positive. And Steelcase has such a wide variety of products and capabilities.** Our team has appreciated the level of service that Steelcase caters to us. ”

-NYC Design & Construction Organization

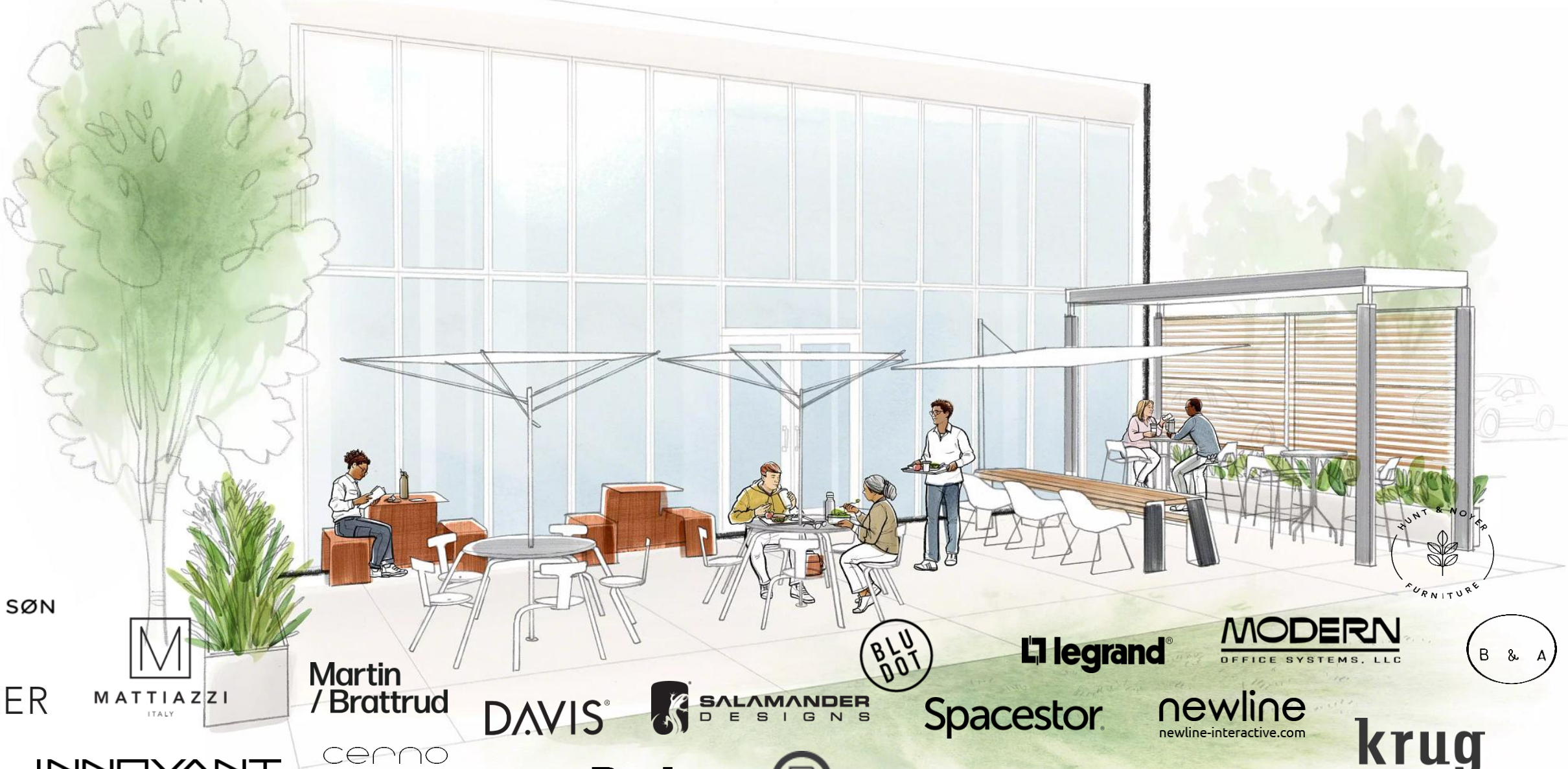
“ The quality of their service delivery is **unsurpassed by others in the Steelcase Network** ” - American Multinational Technology Corporation

“ It's the people! Waldner's staff provide consistently creative and capable solutions to our furniture needs with **careful attention to our specific requirements for durability, price and aesthetics. Your staff cares as much as we do about the result.** We also have fun working together as a team to get things done. ”  
- Private Ivy League University



# Our Vendor Partners

With over **300 partnerships**, Waldner's is the **one source** that makes it easy to find and get everything you need.



**Steelcase**

**coalesse**

**DESIGNTEX**

**orangebox**

**AMQ**

**viccarbe**

**xioa**

**NeutralPosture**

**SitOnIt • Seating®**

**LOFTWALL**

**Bolia.com**

**west elm**

**emu**

**extremis®**

**FLOS**

**UniFor**

**Microsoft**

**SNOWSOUND**  
Acoustic Technology & Design

**m.a.d. furniture**

**CARL HANSEN & SØN**  
PASSIONATE CRAFTSMANSHIP

**DATESWEISER**

**mooi**

**nanimarquina**

**Tom Dixon.**

**Established SONS**

**Kartell**

**Kimball® International**

**BERNHARDT|design**

**BF**

**MATTIAZZI**  
ITALY

**INNOVANT**

**skram**

**ALUR**

**RODGER STEVENS**

**STAK CERAMICS**

**studio TK**

**nevins.**

**CUMBERLAND**

**BRIAN DUBOIS ATELIER**

**Martin / Bratrud**

**cerno**

**ANCHAL [on-chal]**

**urbantree**  
Tree Reclamation | Fine Woodworking

**MIO**

**wallace#sewell**

**STYLEX**

**HAT COLLECTIVE™**

**misewell**

**S**

**DAVIS®**

**SALAMANDER DESIGNS**

**Bend Goods**

**memo**

**SAVANNAH HAYE!**

**Poliform**

**THE SKATEROOM**

**tronk**

**handcraft**

**9to5®**  
seating

**BLU DOT**

**legrand®**

**Spacestor**

**newline**  
newline-interactive.com

**MODERN**  
OFFICE SYSTEMS, LLC

**B & A**

**krug**

**PETER PEPPER PRODUCTS**

**LEADHEAD CLASS**

**OFS**

**BISLEY**

**NATIONAL**

**global**

**HBF**

**AIS**

**WALTER K.**

**dauphin**

**logiflex**

**Claridge**  
The Writing Surface Experts®

**vitra.** **HALCON**

**nienkämper**

**three h**

**spec™**

**Andreu World**

**esi.**

**KI**

**fatboy**

**FLOYD**

**HON.**

**David Weeks Studio**

**MILES & MAY**



# Project Process

**Waldner's**  
Furniture. Technology. Service.

**WOMEN  
OWNED**  
CERTIFIED BY WOMEN'S BUSINESS ENTERPRISE  
NATIONAL COUNCIL



# *Project Development Process*

## Design Collaboration Phase



1.



**Review the Floorplan**  
in collaboration with the  
project team

2.



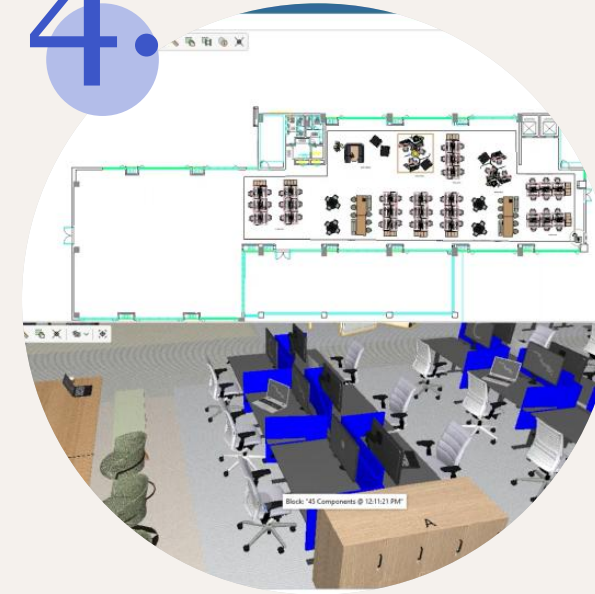
**Design Development**  
Conceptual layout  
and furniture typical  
solutions

3.



**Design Review**  
through detailed  
drawings and **live  
design session** with  
our workplace  
designer

4.



**Space Planning**  
integration and  
coordination of  
furniture typicals into  
the **architectural  
floorplate**

5.

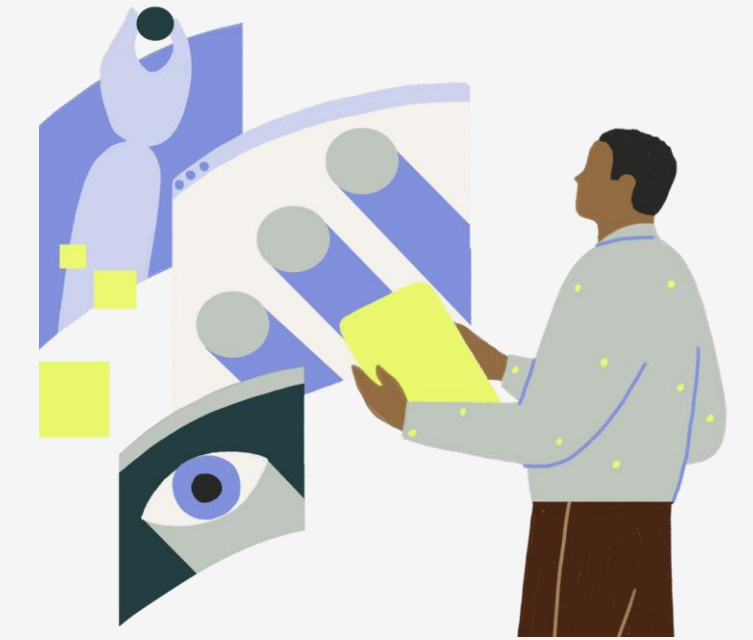


**Specification of all  
furniture** components  
for order entry including  
thorough audits



# *Project Development Process*

## Pre-Order Phase



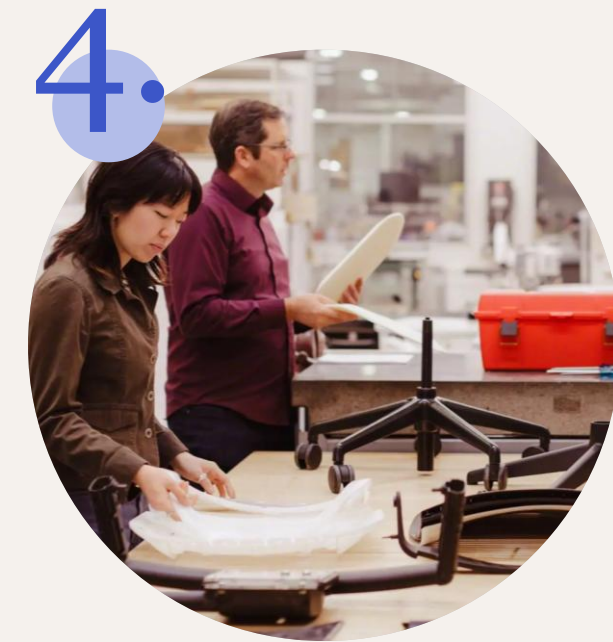
**1.** Finalize and check all **finish selections** in collaboration with the project **stakeholders**



**2.** Reserve **upholsteries**, if multiple dye lots are needed, **a CFA will be provided**



**3.** Submit final quotes to project team **for approval**



**4.** Orders to be placed, production initiated, and **status report generated**

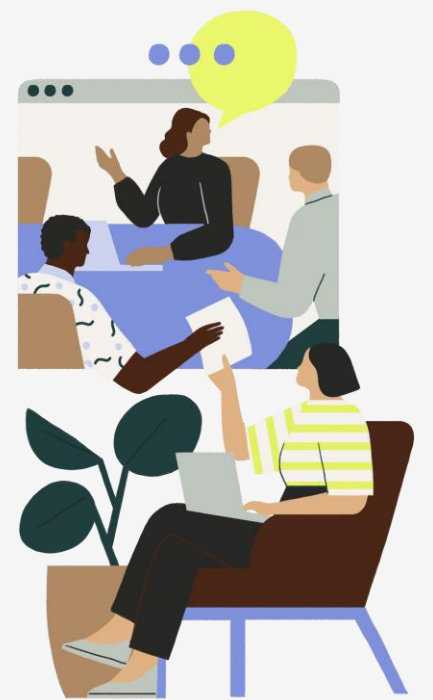


# Project Development Process

## Post-Order Phase

### On Site Leadership

A dedicated project manager oversees all field services, walkthroughs, and punch lists, using Fieldwire to streamline workflows and enhance project efficiency.



**1. Attend project meetings** as scheduled to ensure coordination with all other trades onsite



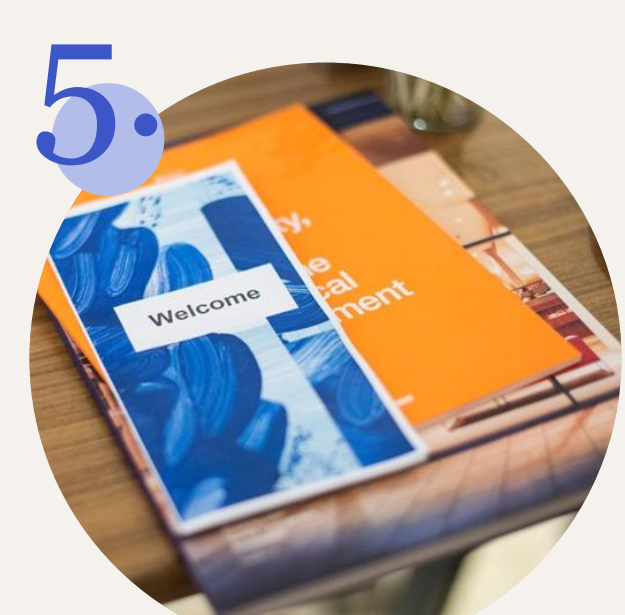
**2. Project Manager** to conduct a **comprehensive site survey** to assess critical dimensions and power/data access



**3. Validate order shipment** and receipt dates. Update and reissue **status reports** and **schedules** to all team members



**4. Delivery and Installation** per project schedule and unique site conditions. Project Manager **tracking and resolving punch list** items throughout the project



**5. Project Completion** including **project punchlist report** and **Closeout book**





# Design Capabilities

**Waldner's**  
Furniture. Technology. Service.

**WOMEN  
OWNED**  
CERTIFIED BY WOMEN'S BUSINESS ENTERPRISE  
NATIONAL COUNCIL





# Waldner's Design Technology + Tools



## Live Design

With CET Designer, we can **create a realistic, interactive environment** simulation that can be **adjusted in real time**. This enables seamless navigation and on-the-spot updates, **reducing revisions** and **speeding up the design process**.



## Renderings

**Photo-realistic renderings** can give clients a clear and immersive representation of textures, colors and finishes. This process enhances their **confidence in decision-making** as they can see their vision come to life.



## Specifications

CET software enables us to **generate product specifications** as we build, and combined with Hedberg, it **simplifies and streamlines the process**.



## Shop Drawings

Shop drawings are prepared to provide clients with a **clear understanding** of project requirements, showcasing crucial details like **electrical components, site dimensions, and installation specifics**.





Steelcase®  
LEARNING

# Learner-Centered Classrooms



Waldner's  
Furniture. Technology. Service.



WOMEN  
OWNED  
CERTIFIED BY WOMEN'S BUSINESS ENTERPRISE  
NATIONAL COUNCIL



# Research + Key Findings

---



# Traditional

Vs

# Learner-Centered

---

Built for “stand and deliver, sit and listen” pedagogies in passive learning settings



Student involvement in developing and sharing content

---

Teacher directed engagement



Interactive learning that supports multiple types of collaboration

---

Fixed layouts, furniture with limited mobility



Variety of spaces in which learning happens, multi-sensory approach to teaching and learning

---

Limited technology, poorly integrated, often teacher directed and controlled



Choice and control empowers student agency

---



# The Positive Impact of Learner-Centered Classrooms

01

Improve measurable  
student learning  
outcomes

02

Provoke strong  
improvements in  
student engagement

03

Encourage the use  
of active learning  
technologies by  
instructors

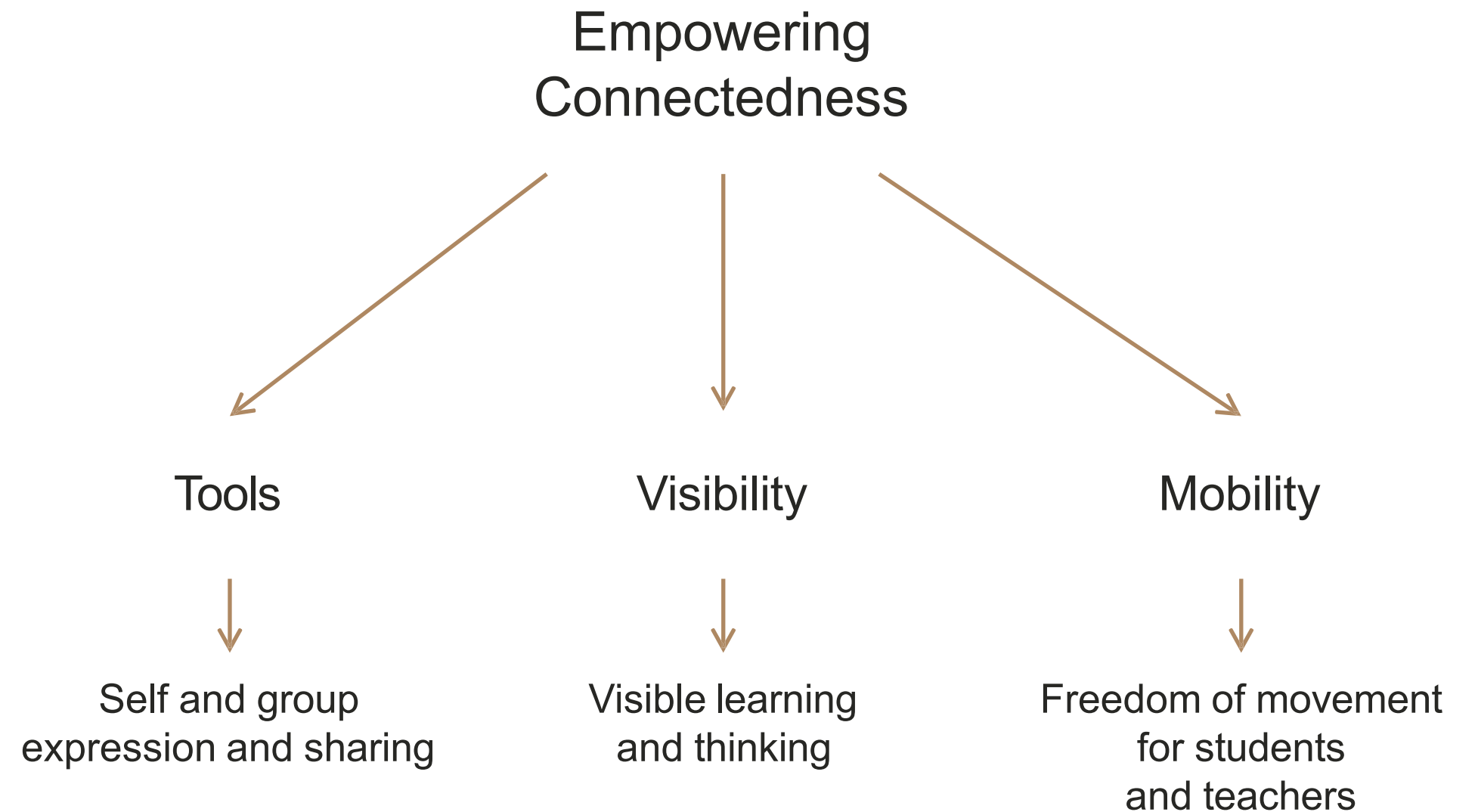
04

Create a significant  
system-wide impact on  
the social and cultural  
patterns in schools



# Empowering Connection

Connectedness emerges as the common denominator in the larger cultural effects for learner-centered classrooms on students and instructors





# Key Insights

## 01 Flexibility

Flexible classrooms serve as a stage that can enhance learning experiences

## 02 Wellbeing

The built environment and space can foster physical and psychological wellbeing and inclusion

## 03 Technology

Digital tools can amplify teaching and learning but can also serve as a barrier



## 04 Change Management

The transition to learner-centered classrooms should be intentionally designed



# 01

## Flexible classrooms enhance learning experiences





## 02

The built environment  
can foster physical and  
psychological wellbeing  
and inclusion



Meaning

To create purpose



Belonging

To be a part of



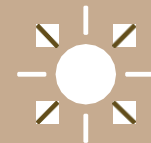
Authenticity

To be oneself



Mindfulness

To be aware + open



Optimism

To be positive



Vitality

To be healthy + active



03

Digital tools amplify  
teaching and  
learning but can  
also be a barrier





04

The transition to learner-centered classrooms requires intentional design



Knowledge + Training

Learner-centered Knowledge  
Training Approach



Growth Practices

Learner-centered Culture  
Technology Approach  
Classroom Use  
Scheduling Practices



Student Success

Student Success Showcase



Team + Institutional Support

Champions  
Planning Team  
Funding Strategy



# Design Principles + Applications

---

**Waldner's**  
Furniture. Technology. Service.

**WOMEN  
OWNED**  
CERTIFIED BY WOMEN'S BUSINESS ENTERPRISE  
NATIONAL COUNCIL

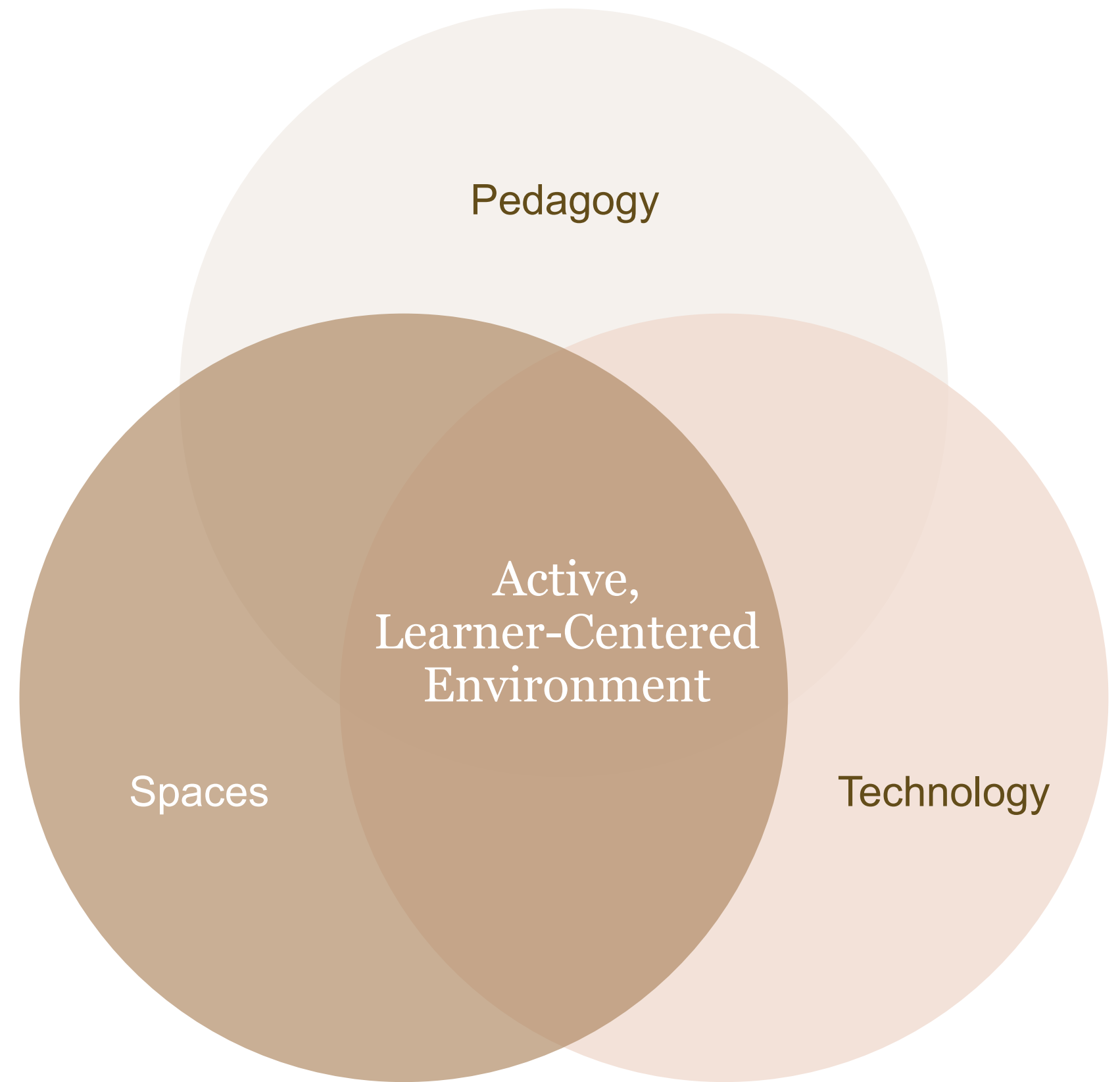
**Steelcase®**  
LEARNING



# Learning Spaces Ecosystem

How can classrooms...

- foster deep and authentic learning?
- improve wellbeing and inclusion?
- assist with project-based learning?
- support hybrid learning?
- perform effectively yet efficiently?





# Connect + Collaborate

Optimize adjacencies

Support social learning

Plan for informal + formal learning

Design for creativity + sharing

Support changing pedagogies





# Discover + Support

Provide opportunities for exploration

Help students + faculty navigate

Guide + advise students

Provide clear access to resources

Remove barriers to technology





# Focus + Be Productive

Optimize performance in work + study spaces

Create spaces to concentrate and focus

Plan for comfort, security and wellbeing

Empower people with choice and control

Plan flexibility for changing needs





# Classroom Design Principles

## 01 Design for Flexibility



## 02 Allow for Individual Choice + Control

## 03 Provide Access to Tools, Resources + Belongings

## 04 Support Inclusion + Wellbeing



01

# Design for Flexibility

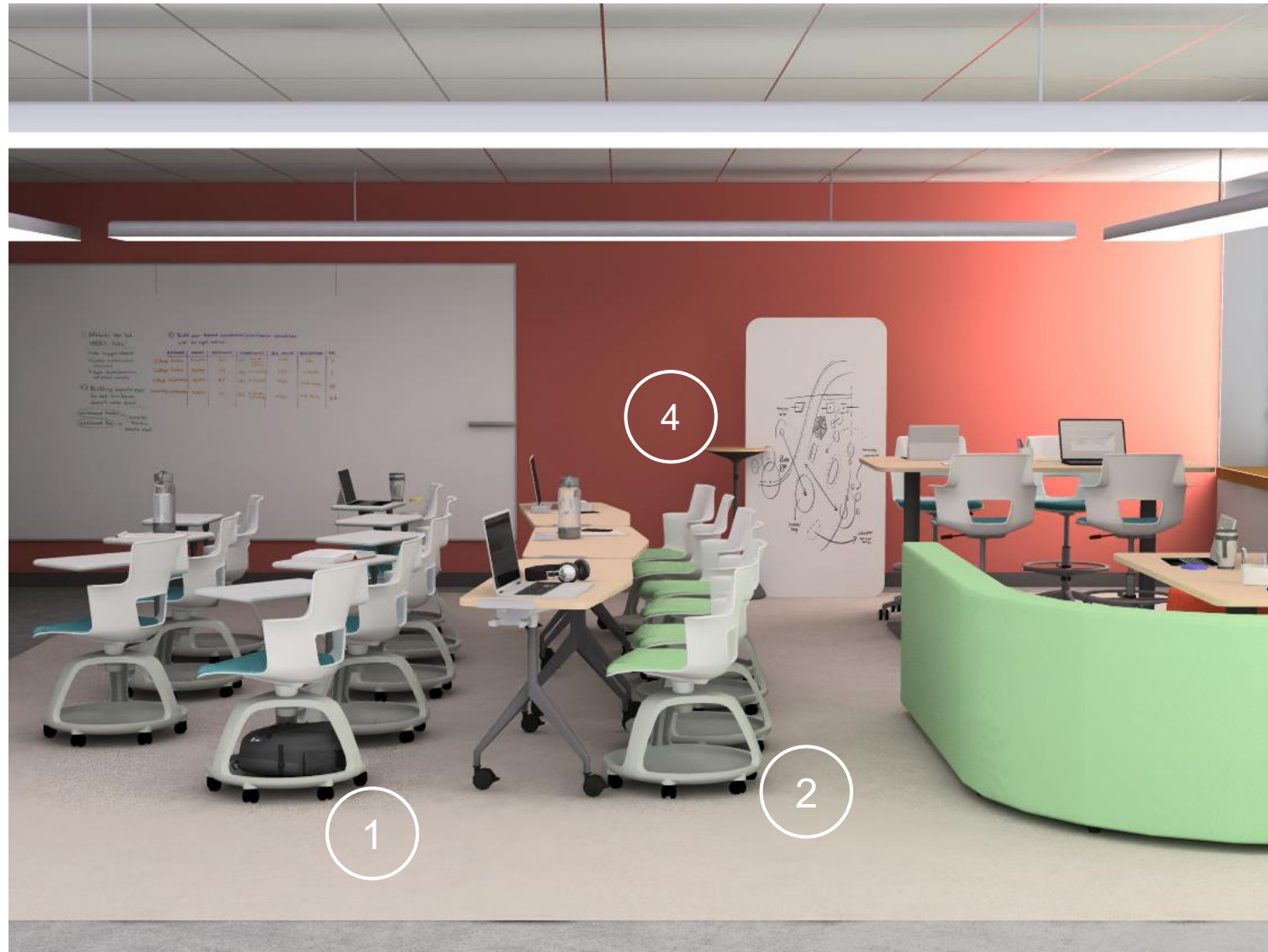
Space can be used for multiple  
and changing functions

Objects in the space can be easily and quickly  
moved to facilitate many different learning  
activities and support a variety of learning needs

Space can be zoned in unique ways

Generally, doesn't require facilities support





# Design for Flexibility

1. **Movement:** Students can follow the flow of learning and quickly transition between lecture and small-group learning modes.
2. **Versatility:** This furniture kit of parts can be arranged into small group breakouts for peer-to-peer learning, in a presentation layout with a single point of focus or many other configurations as teaching methods and activities change throughout the day.
3. **Collaboration:** Lounge areas create a unique zone in the classroom for small-group focus, brainstorming or peer-to-peer tutoring.
4. **Engagement:** The physical environment should function as a learning tool. Writable and tackable vertical wall surfaces make thinking visible and can be easily moved throughout the space.

Space Type Shown: Higher Ed Seminar Classroom



# Design for Flexibility



- 1. Movement:** The durable science tables are no longer tethered to the floor but instead have locking casters and can dock to the perimeter cabinetry, which hosts shared sinks, power and gases.
- 2. Versatility:** The classroom can be zoned into lab and direct instruction zones, or combined and rearranged as learning activities change throughout class.
- 3. Adaptability:** Height-adjustable tables adapt to changing needs and meet a wide range of learner needs across campus.

**Space Type Shown:**  
Science Lab Classroom



02

# Allow for Individual Choice + Control

Provide options for multiple postures

Consider furniture that adjusts to individual users  
(seat and table height)

Provide spaces for both privacy and collaboration

Accommodate the need for movement

Provide flexibility for instructors to move through  
the space and work, teach and support students  
in multiple postures, zones and groupings.

Allow for multiple presence options (in the  
classroom, outside the classroom, virtual)





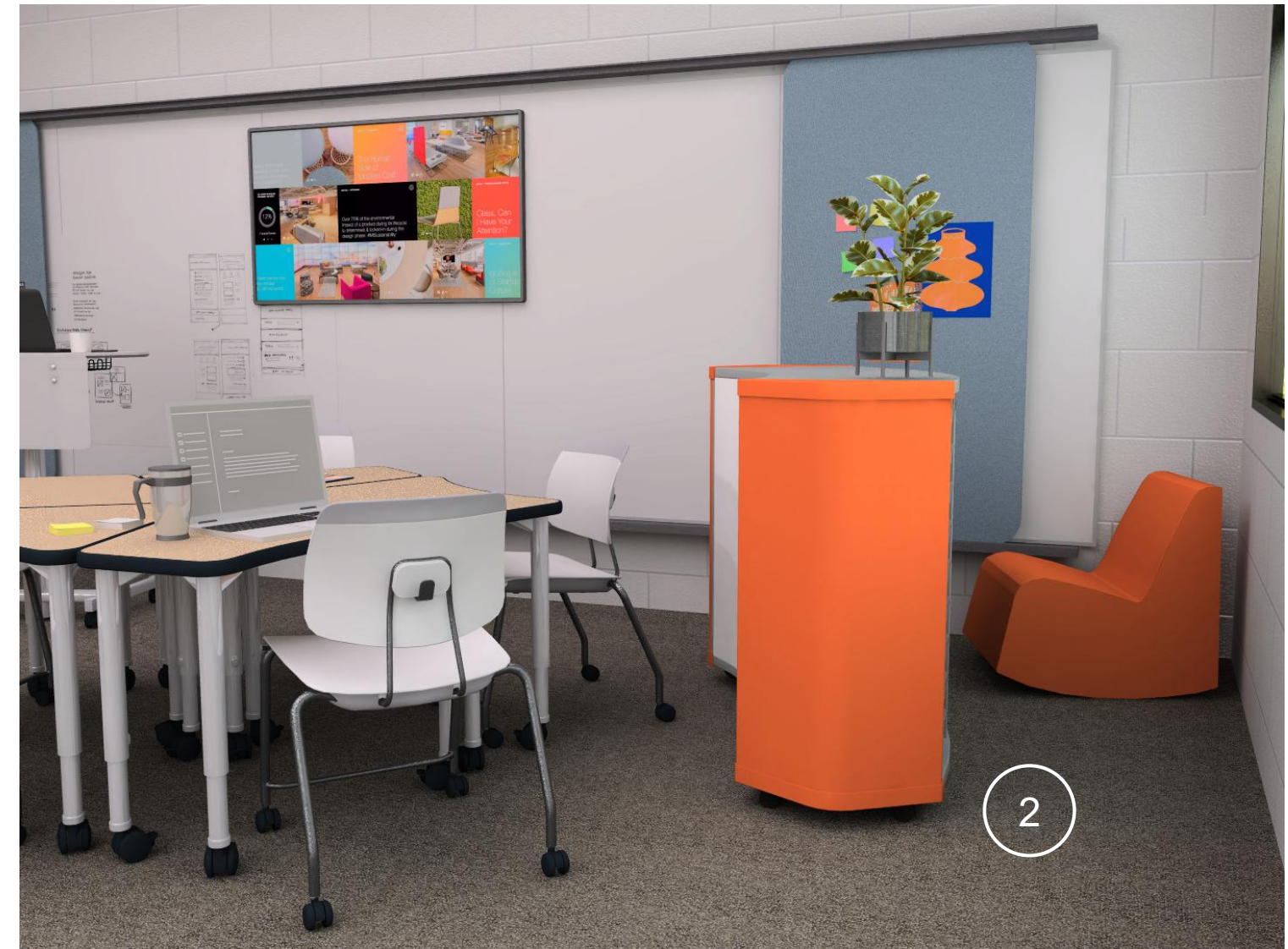
# Allow for Individual Choice + Control

1. **Adaptability:** With multiple, flexible zones including soft seating areas, tall perimeter tables and group tables, students are empowered to choose and create settings that best meet their preferences and needs.
2. **Collaboration:** Writable and tackable surfaces empower students to collaborate visually and create privacy where and when it's needed.

3. **Inclusion:** Technology that accommodates virtual as well as in-person participation supports learning and connection between all students and provides flexibility of presence based on individual needs.

Space Type Shown: Large Breakout Classroom





# Allow for Individual Choice + Control

1. **Wellbeing:** This room is designed to support students' unique learning processes by providing a diverse range of places to think, work, interact and create.
2. **Privacy:** Mobile storage can be used to create private zones for individual focus or emotional regulation.

3. **Adaptability:** Multiple postures are supported by lounges, rockers, seated-height chairs and stools.

Space Type Shown: Flexible Seating Classroom



# 03

## Provide Access to Tools, Resources + Belongings

Visual and audio clarity: clear sight lines to instructional content, screens, whiteboards and instructor

Access to technology tools and power

Access to collaborative tools, learning materials and classroom resources

Vertical space for collaboration, information sharing and presenting student work

Storage and access to personal belongings, including laptops and phones, beverages and food, backpacks and coats

Storage for frequent-use and lesser-used learning materials and secure storage for instructor's belongings and materials



# Access to Tools, Resources + Belongings



1. **Adaptability:** Stackable, mobile storage units create a variety of zones and provide learner-accessible spaces to store belongings, toys and learning manipulatives.
2. **Access to Belongings:** Modular storage along the wall creates ample space for individual student storage while maintaining a small footprint in the room.
3. **Visual Clarity:** Ensure clear sightlines to learning content, like whiteboards and flip-charts.

Space Type Shown:  
Early Childhood Pre-K Classroom





# Access to Tools, Resources + Belongings

1. **Adaptability:** A versatile and agile collection of tools and storage enables current and future flexibility as technology and teaching methods change.
2. **Access to Belongings:** Under-seat bag hooks allow students to access their personal belongings, keep bags off the floor and keep walkways clear.

3. **Access to Tools:** Immersive technologies give students the opportunity to visit places and scenarios they might not be able to encounter, providing a deep, sensory learning experience.

Space type shown: Makerspace Classroom



04

# Support Inclusion + Wellbeing

Foster connection (eye-to-eye) and collaborative opportunities between students and between instructor and students

Incorporate natural elements, biophilia, lighting and colors that promote wellbeing and engagement

Provide students with developmentally appropriate choices, considering task, team and location

Create opportunities for more privacy or 1-on-1 conversations within the classroom



# Support Inclusion + Wellbeing



- 1. Inclusion:** Group-based seating builds connection, trust and collaboration between students.
- 2. Wellbeing:** Colors within a space have the power to influence physiological and psychological responses. Cool hues of blues, greens and natural tones tend to relax and reduce overwhelming feelings or overstimulation. Natural light and window views can restore focus and a sense of calm.
- 3. Versatility:** Students can work together at tables, lounge settings or find private spaces for quiet thinking or emotional regulation.

Space Type Shown:  
Flexible Seating Classroom



# Support Inclusion + Wellbeing



1. **Wellbeing:** Comfort is essential in learning environments where students often spend multiple hours engaged in hands-on exercises, collaborative projects or group discussions.
2. **Adaptability:** Students can take advantage of the sides and back of the room to offer a choice of different postures and settings.
3. **Inclusion:** Technology for hybrid participation, including side-by-side monitors and multiple cameras, ensures learners are included whether they join in-person or remotely.

Space Type Shown:  
Multipurpose Classroom



# Additional Applications

---

**Waldner's**  
Furniture. Technology. Service.

**WOMEN  
OWNED**  
CERTIFIED BY WOMEN'S BUSINESS ENTERPRISE  
NATIONAL COUNCIL

**Steelcase®**  
LEARNING



# Multi-Modal Classroom



1. **Collaboration:** Different settings in the room encourage engagement and social interaction among students, which help deepen their understanding and ability to collaborate.
2. **Wellbeing:** Support students' auditory wellbeing by applying sound-absorbing materials throughout the space, such as fabric screens, upholstered seats, decorative acoustical ceiling tiles and carpeting.
3. **Engagement:** Research has shown that multi-modal instruction promotes student learning and academic achievement in 6-12th grade classrooms.



# Collaborative Classroom



1. **Engagement:** Encourage the design thinking process with writable magnetic boards within students' reach, enabling discovery, ideation, experimentation and revision.
2. **Wellbeing:** People are instinctually drawn to elements of biophilia, which help reduce stress and boost wellbeing. Consider adding subtle botanical elements, such as artwork on the top of the whiteboard or a motif on a privacy screen.
3. **Individual Choice + Control:** Allow students to choose where and how they engage in tasks to develop self-regulation and agency and foster a sense of autonomy and greater engagement.
4. **Access to Belongings:** Provide a range of storage options so students can develop ownership of their learning tools and belongings and help teach organization and responsibility.



# STEM Classroom



- 1. Accessibility:** Conveniently store equipment and supplies in organized mobile storage units to help students explore and experiment with concepts through hands-on learning, doing and sharing.
- 2. Wellbeing:** Design the STEM classroom to welcome student inquiry, peer-to-peer learning and the development of the whole person cognitively, emotionally and physically.
- 3. Flexibility:** The durable science tables with locking casters are untethered from utilities and can be moved into different configurations for different activities. They are also available in both task and tall stool heights.
- 1. Individual Choice + Control:** Provide students with developmentally appropriate choices to leverage the classroom as a learning tool, including furniture, walls, storage, carts, totes, screens, etc.



# Engineering Classroom



1. **Flexibility:** Give instructors and students a flexible furniture kit of parts with options such as wheels on tables and chairs, flipping/nesting tables, swivel chairs and tall posture stools.
2. **Accessibility:** A flexible classroom supports this learning approach by providing ample accessibility and space for students to collaborate and work on their projects.
3. **Individual Choice + Control:** Swivel chairs allow students to rotate in their seats and follow the flow of discussions between the instructor, students and shared content.
4. **Access to Tools:** Thread underfloor power system with hubs throughout the room brings power to wherever students are working, even on hard LVT floors.



# STEAM Art Classroom



1. **Access to Tools:** Integrating technology into the art classroom can help to enhance creativity and provide students with new opportunities for expression.
2. **Access to Tools:** Design for the creative thinking process and building physical projects, with shelves and carts nearby to store supplies, materials and tools.
3. **Wellbeing:** Acoustical hanging panels and tackboards help absorb sound in spaces that typically have hard, cleanable surfaces where reverb might be a problem for sound-sensitive learners.
4. **Individual Choice + Control:** Utilize an active zone on walls for students to express ideas and add a magnetic secondary display zone above to showcase student work for everyone to see.



# Outdoor Learning Areas



1. **Individual Choice + Control:** Adapt tables meet ADA requirements to accommodate people using wheelchairs.
2. **Flexibility:** The furniture is durable and designed for extreme weather, with security features so it won't blow away or be stolen.
3. **Wellbeing:** The outdoor furniture supports a variety of activities, including group projects, break time, lunch and team meetings.



# Tech Breakout Classroom



1. **Access:** Power at each table can connect to Thread in-floor connectors, so tables can be “plug and play” and moved into different arrangements.
2. **Flexibility + Access:** TVs no longer need to be tethered to walls; instead, they can be intentionally housed inside movable tables that can be moved freely throughout the room.
3. **Individual Choice + Control:** Content on monitors can be configured so the instructor can share it with all tables or select one table’s content to array on all monitors during discussions and presentations.
4. **Access:** Embedded monitors inside tables can be raised for group tech breakouts where students can share and generate content together and lowered for lectures and discussions requiring clear sightlines.



# Large Active Classroom



- 1. Individual Choice + Control:** Soft work-lounge chairs in the front of the room and stool-height tables near the back provide comfortable options that support various postures.
- 2. Access to Tools:** Scale learning to a larger audience by providing monitors, projectors, cameras, speakers and mics so everyone can see and be seen, hear and be heard -- whether in class, online or across multiple campuses.
- 3. Flexibility:** Increase student engagement by providing furniture in U-shaped tiers, with content on the longer wall in 'landscape' orientation, which decreases sightlines between instructor, students and information.
- 4. Access to Tools:** Thread underfloor power system with hubs throughout the room bring power to students wherever they are located.



# Product Solutions

---

**Waldner's**  
Furniture. Technology. Service.

**WOMEN  
OWNED**  
CERTIFIED BY WOMEN'S BUSINESS ENTERPRISE  
NATIONAL COUNCIL

**Steelcase®**  
LEARNING



# Classroom Seating



Steelcase  
Tenor®



Steelcase  
Node®



Steelcase  
Shortcut®



Steelcase  
Move™



Steelcase  
Max Stacker III®



AMQ®  
Bixby™



Steelcase  
Amia®



Steelcase  
Series 1



Steelcase  
Think®



Steelcase  
Cobi®



# Classroom Seating



Steelcase  
Reply® Leg



Steelcase  
Reply® Sled



Steelcase  
Leap®



Steelcase  
Gesture®



Steelcase  
Cachet®



Steelcase  
Kart®



Steelcase  
Series 2



Steelcase  
Flex Perch



Smith System™  
Theorem® Seating



Smith System™  
Numbers™



# In-between Lounge Seating



Steelcase  
Brody™ Desk



Steelcase  
Brody™ Lounge



Steelcase  
Buoy®



Orangebox  
Ramsey



Steelcase  
Campfire Pouf®



Orangebox  
Skomer



Steelcase  
B-Free®



Steelcase  
Campfire Lounge®



Coalesse  
Hosu®



Orangebox  
Away from the Desk



# In-between Lounge Seating



Coalesse  
Lagunitas® Lounge



Coalesse  
SW\_1® Lounge



Smith System™  
Oodle®



Smith System™  
Flowform™



Steelcase  
Jennv®



Steelcase  
Slyvi Lounge



Steelcase  
Alight®



Coalesse  
Ensemble Lounge System



Coalesse  
Sistema Lounge System



# Desks + Tables



Steelcase  
Verb®



Steelcase  
Verb® Flip-Top



Steelcase  
Verb® Active Media Table



Steelcase  
Elbrook



Smith System™  
Elemental®



Smith System™  
Silhouette®



Smith System™  
Interchange®



Smith System™  
Flowform™



Smith System™  
Planner®



Smith System™  
Cascade® Desk



# Desks + Tables



Smith System™  
Numbers™



AMQ®  
Concur™



Steelcase  
Flex Personal Table



Steelcase  
Groupwork



Steelcase  
Groupwork Flip-Top



AMQ  
Cluvo



Coalesse  
Lagunitas Focus Nook



Steelcase  
Flex



Steelcase  
Migration SE



Blu Dot  
Stash Desk



# In-between Tables



Steelcase  
Elbrook



Coalesse  
Bix™



Coalesse  
Ballet®



Coalesse  
Montara650®



Steelcase  
B-Free® Table



Coalesse  
Enea™



Coalesse  
Enea Lotus™



Steelcase  
Campfire Slim Table®



Coalesse  
Bob™



Steelcase  
Campfire Big Table®



# In-between Tables



Steelcase  
Groupwork



Smith System™  
Café



Smith System™  
Flowform™



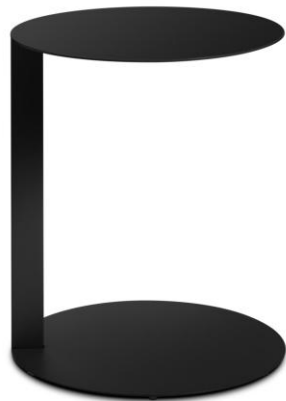
Steelcase  
Flex



Steelcase  
Simple



Steelcase  
Campfire Skate



Blu Dot  
Note



Steelcase  
Campfire Personal



Coalesse  
Free Stand



West Elm Work  
Linear C



# Whiteboards



Steelcase  
Verb® Personal Whiteboard



Steelcase  
Flex Whiteboard + Stand



Steelcase  
Verb® Easel



Steelcase  
Groupwork Screen



Polyvision®  
Mobile™



Steelcase  
Groupwork Mobile Easel



Polyvision®  
Textura™



Steelcase  
Huddleboard™  
Mobile Easel



Steelcase  
Pivot®



Coalesse  
Exponents®



# Whiteboards



Steelcase  
Flex Board + Cart



Smith System™  
Planner® Studio  
Whiteboard



Polyvision®  
Motif™



Polyvision®  
Sans™



Polyvision®  
Nota™



Polyvision®  
Serif™



Polyvision®  
Flow™



Steelcase  
Senti™



Steelcase  
110 + 555 Series



Steelcase  
Edge™ Series



# Architecture + Space Division



Orangebox  
Campers & Dens



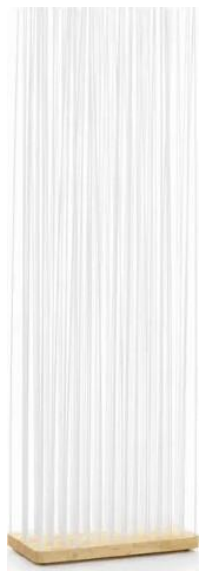
Orangebox  
Air3



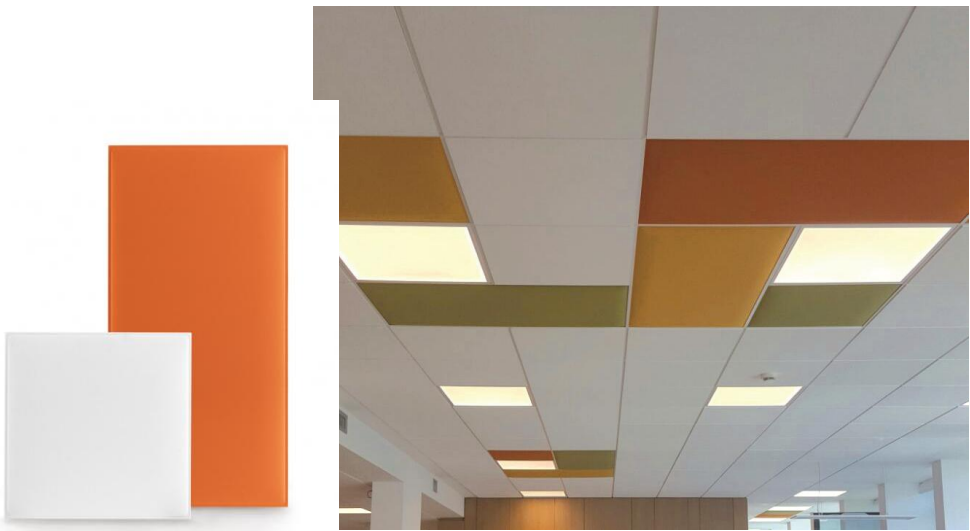
Orangebox  
On the QT



Steelcase  
Ocular View



Extremis  
Sticks Divider



Snowsound  
IN Acoustic Ceiling Panels



Steelcase  
Flex Screens



Steelcase  
Campfire Screens



# Technology



Steelcase  
Verb® Active Media Table



Steelcase  
Media:scape®



Steelcase  
Roam Cart



Steelcase  
Flex Media Cart



Steelcase  
QTPro Sound Masking



Steelcase  
Powerstrip Intro



Steelcase  
Thread



GoBright  
Room Booking



Logitech  
Rally Bar Video Conferencing



Newline  
Interactive Displays







# Thank You!

Have questions about Learning Spaces?  
We would love to hear from you!  
Whether you need general information  
or are planning a project, our dedicated  
team is here to help you at any stage.

**Reach out today!**  
**Contact@waldners.com**

**Waldner's**  
Furniture. Technology. Service.

**WOMEN  
OWNED**  
CERTIFIED BY | WOMEN'S BUSINESS ENTERPRISE  
NATIONAL COUNCIL

