

//node

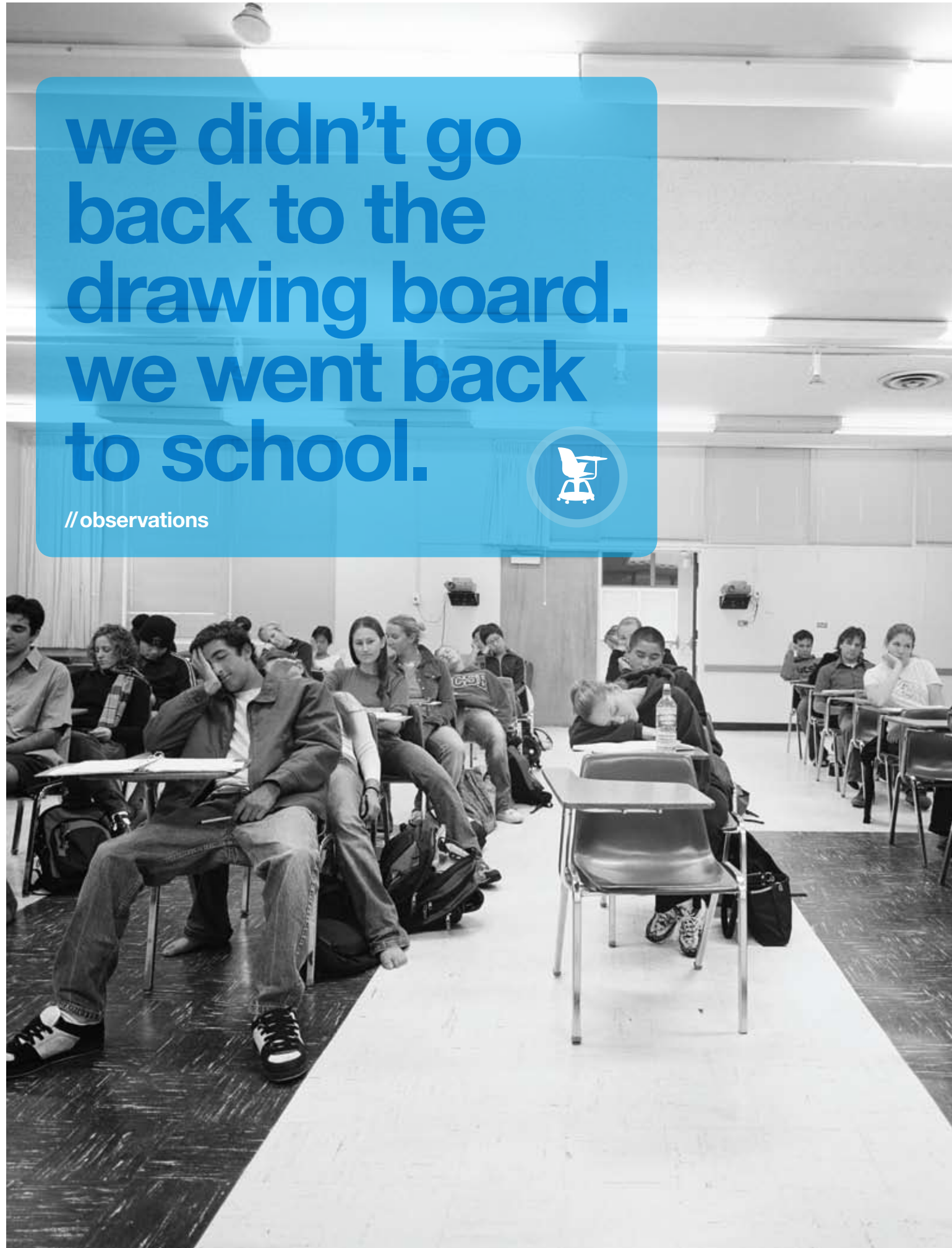


# Steelcase

Education Solutions

# we didn't go back to the drawing board. we went back to school.

//observations



“The biggest issue with the way the classroom is set up is that it’s assuming there’s one way of teaching and one way of learning.”

*Lesley, professor*

and you know what we found? classrooms stuck in another era.

We found rooms designed for passive, one-way learning, tight rows of desks and chairs that inhibit movement and interaction, and instructors confined to the front of the room, where there are few opportunities to connect with students. All in all, we found cramped, static spaces that have little in common with today’s students.

Today, young people bring new tools, new attitudes, and new expectations into the classroom. Their desire for



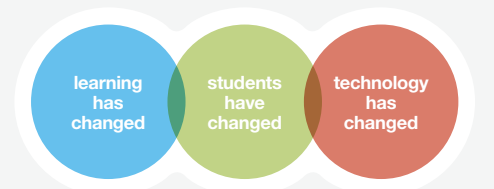
*The inflexible nature of today’s classroom often discourages those with a variety of teaching styles.*

connection is constant. Add campus activities, study groups, and countless one-on-one interactions, and we begin to see just how connected students have become. This need for interaction does not suddenly disappear when they enter the classroom. If anything, it increases.

In order to keep pace, the classroom has to change. Research points to the fact that learning is enhanced when it is social and active. The traditional, lecture-

based “sage on the stage” model has its place. However, a single approach to teaching is no longer enough. Educators are now turning to multiple pedagogies to support multiple learning styles.

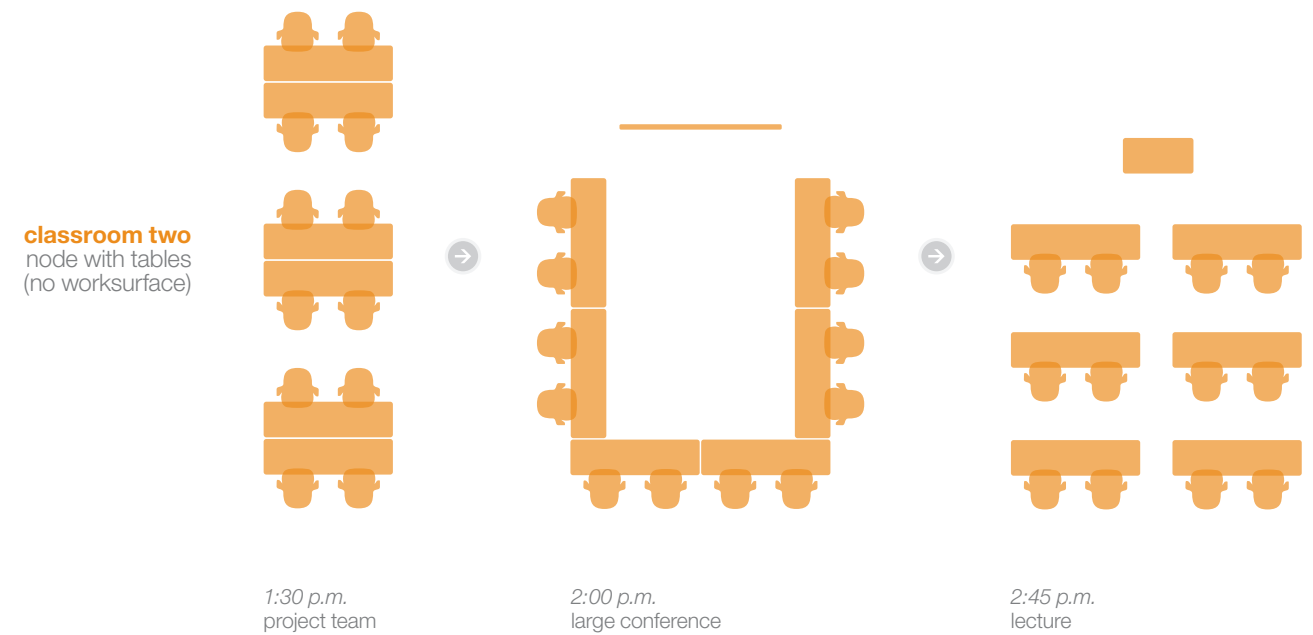
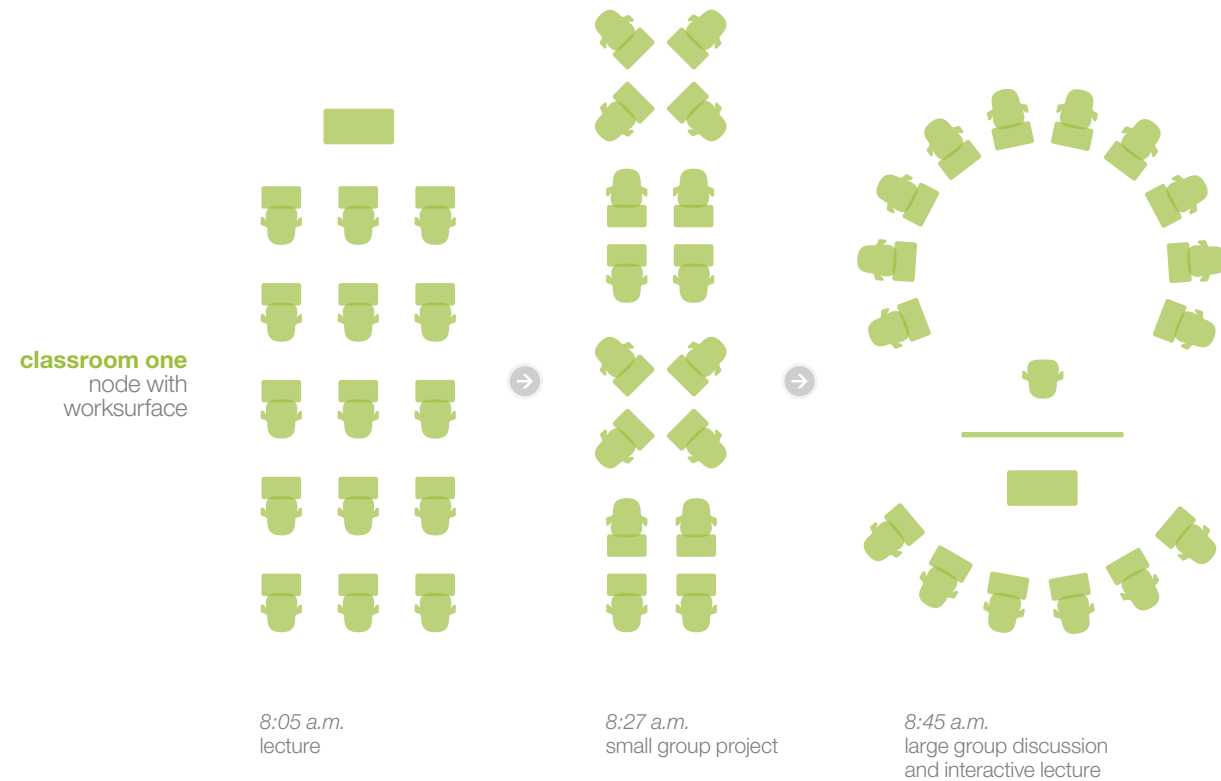
The question is, how can today’s classroom best be utilized? Particularly at a time when expanding enrollments and shrinking budgets are calling for more students to fit into existing facilities. While everything about learning is changing, the classroom remains stuck in the past.



*education has changed*

We have good news, though. There’s one solution that’s surprisingly simple.

//ideas & insights



students are wired differently these days. they desire an active learning environment.

While they might not come right out and say it, students expect more from their classrooms than ever before. They want their surroundings to support co-learning, co-creation, and open discussion. Not only does the research indicate this, but it's what you find when you observe young people inside (and outside) the classroom. They're hands on, tackling a variety of tasks at once. This all leads to the demand for flexible environments.

In the absence of a solution, educators have been faced with a tough choice: promote active learning, or organize a classroom to fit as many students as possible. It's one or the other. The existing classroom footprint is only so big, and there's not much flexibility. Until now.

The node™ chair is mobile and flexible. It's designed for quick, easy transitions between room configurations. With node, a classroom can flex from a lecture-based mode to a team-based mode, and back again, without interruption. In other words, node can take a passive space and make it active. We know that rising enrollments

“My most memorable classes are the ones where we break away from lecture and work in a team.” *Roshan, student*

are putting pressure on classrooms. The node chair supports active and team-based modes of learning, even when student density is important.

A classroom doesn't have to be any larger. It simply has to have the right chair.



introducing node.



**node** 

// for the many modes of learning

// smart solution



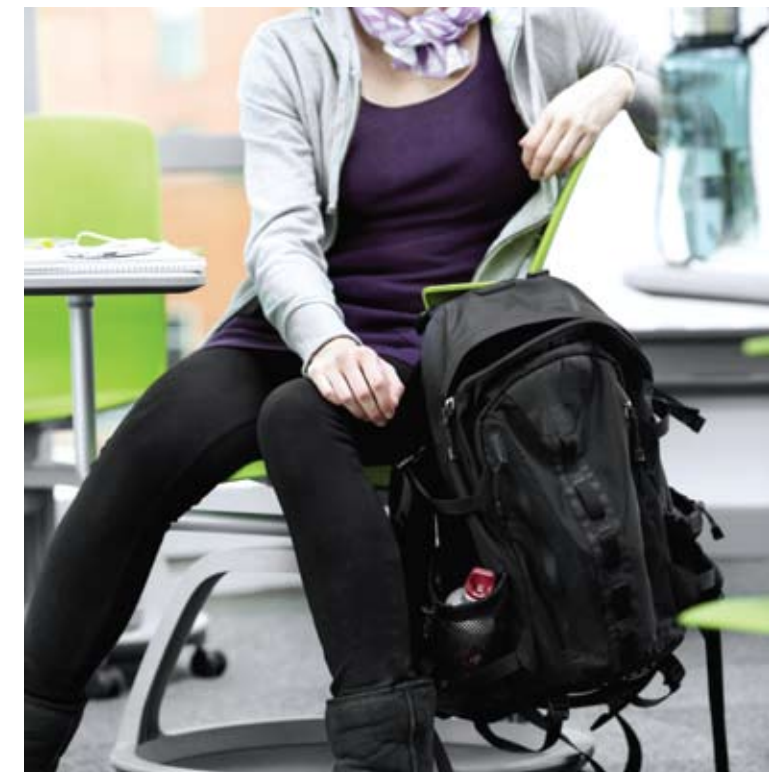
better classroom performance can be summed up with three simple words.

**Move.** The node chair is highly mobile—a quality that translates directly into classroom performance. After all, a lesson plan can be carried out more effectively when seating is arranged and rearranged effortlessly. Traditional classroom seating has limited mobility, putting the burden on educators to adapt. The node chair, however, accommodates any teaching style.

The swivel seat is another design advantage. It gives students the freedom to shift focus throughout the room. And, because the personal worksurface swivels in tandem, books, laptops, and other information remain at their fingertips. It's subtle, but clear sightlines to the instructor, fellow students, and whiteboards can dramatically enhance interaction.

**Fit.** No two students are alike. With that in mind, the node chair has been designed with an adjustable worksurface, providing a perfect fit for students of all shapes and sizes. The node chair's worksurface accommodates both left- and right-handed students. And, unlike traditional classroom seating, the node worksurface has room for laptops, mobile devices, textbooks, water bottles... whatever students bring to class.

**Store.** Until now, there's been very little thought given to where, or how, students are to stow their backpacks and other personal items. The base of the node chair provides a unique storage solution for backpacks and student belongings that usually clutter the aisles. This allows quicker and easier transitions between teaching modes. Even the arms on node serve a storage purpose. Aside from being a place to rest your elbows, they are designed to hold a backpack or bag, keeping personal items safe, secure, and close at hand.

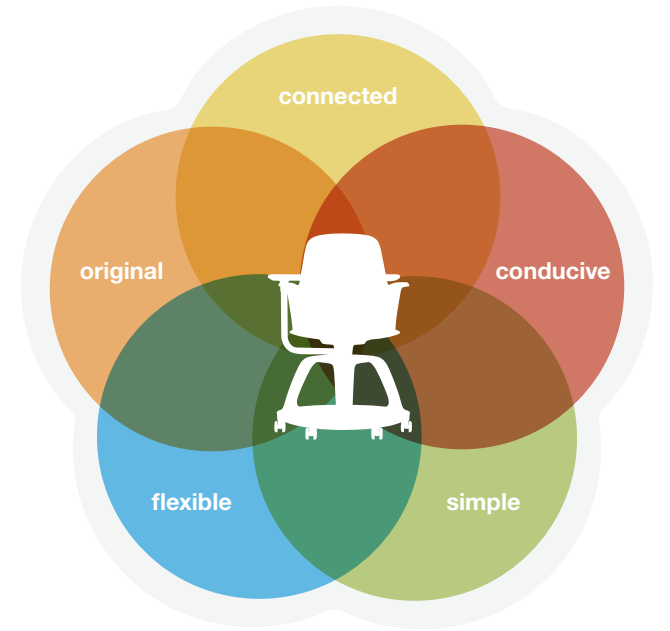




passes  
with flying  
colors.\*



//chooser and user benefits



**students.** Students log a lot of time in the classroom. Shouldn't the chair they sit in make every minute count? The node chair was designed to help today's student be more comfortable, more connected, and more engaged. Its purpose is to support the very reason educational institutions exist. Student learning.

**instructors.** It doesn't seem right that a classroom should dictate teaching styles. With node, you don't have to choose just one teaching style. By supporting multiple teaching modes, students can become more engaged, and maintain better focus. And isn't a classroom full of engaged students more rewarding?

**administrators.** The node chair is a versatile educational tool. It promotes active learning in the unlikeliest of spaces—the traditional classroom. It brings educational performance, and renewed energy, to the dullest spaces. Who knows, it might even put the classroom back on your campus tour.

**facilities managers.** Students clearly aren't tasked with taking care of classroom furniture. For those who are, we made durability, maintenance, and warranty top priorities. The node chair carries the standard Steelcase warranty, and meets the most demanding performance criteria on the market. It was designed to provide comfort without upholstery, making it easy to clean. The worksurface is non-handed, making the purchasing process that much easier. And the node chair can be assembled in 30 seconds without tools.

**architects & designers.** The node chair is different. In order to meet the needs of students, campus administrators, instructors, and facility managers, it had to be. Research shows that traditional classroom chairs aren't keeping up with the latest trends in education. We've designed node to perform in any teaching mode, in nearly any educational setting.

//selected features and statement of line

flexible seat, without pneumatic adjustments to worry about, keeps students comfortable in a variety of postures.

comfort without upholstery means easy maintenance.

open seat design offers easy access, while arms serve as backpack hooks.

personal worksurface is adjustable, non-handed, and large enough to support digital and analog resources.

Steelcase warranty with elevated durability testing makes this an easy choice.

swivel seat keeps open sightlines between student and instructor, whiteboard, and other students.

casters lend mobility for quick, easy transitions between classroom modes.

base keeps backpacks and personal belongings out of the aisle.



Wasabi (6335) with worksurface, platinum base, and casters



Sterling Dark Solid (6059) with platinum base and glides



Citron (6332) with worksurface, platinum base, and casters



Arctic White (6009) with platinum base and casters



Jazz Blue (6336) with platinum base and glides



Picasso (6333) with worksurface, platinum base, and casters



Element (6337) with platinum base and casters



Flash (6334) with worksurface, platinum base, and casters



Platinum (6249) with worksurface, platinum base, and casters



Black (6205) with platinum base and casters



Chili (6338) with worksurface, platinum base, and casters



Midnight (6259) with platinum base and glides



how's this for out-of-the-box thinking? three simple parts assemble in 30 seconds.




**dimensions**

seat depth	16-9/16" d
maximum seat width	19-1/2" w
seat height from floor	18-1/4" h
back height from floor (not seat)	35" h
base diameter	23.7" w
worksurface size	22-1/4" w x 12" d
worksurface depth adjustment	7-1/4" to 15"
maximum width between arms	20-1/8"
worksurface height from floor	28-1/2"

**tripod base**

	6337 element
	6249 platinum solid
	6295 near black

**paint palette**

	4750 champagne metallic
	4799 platinum
	0835 black

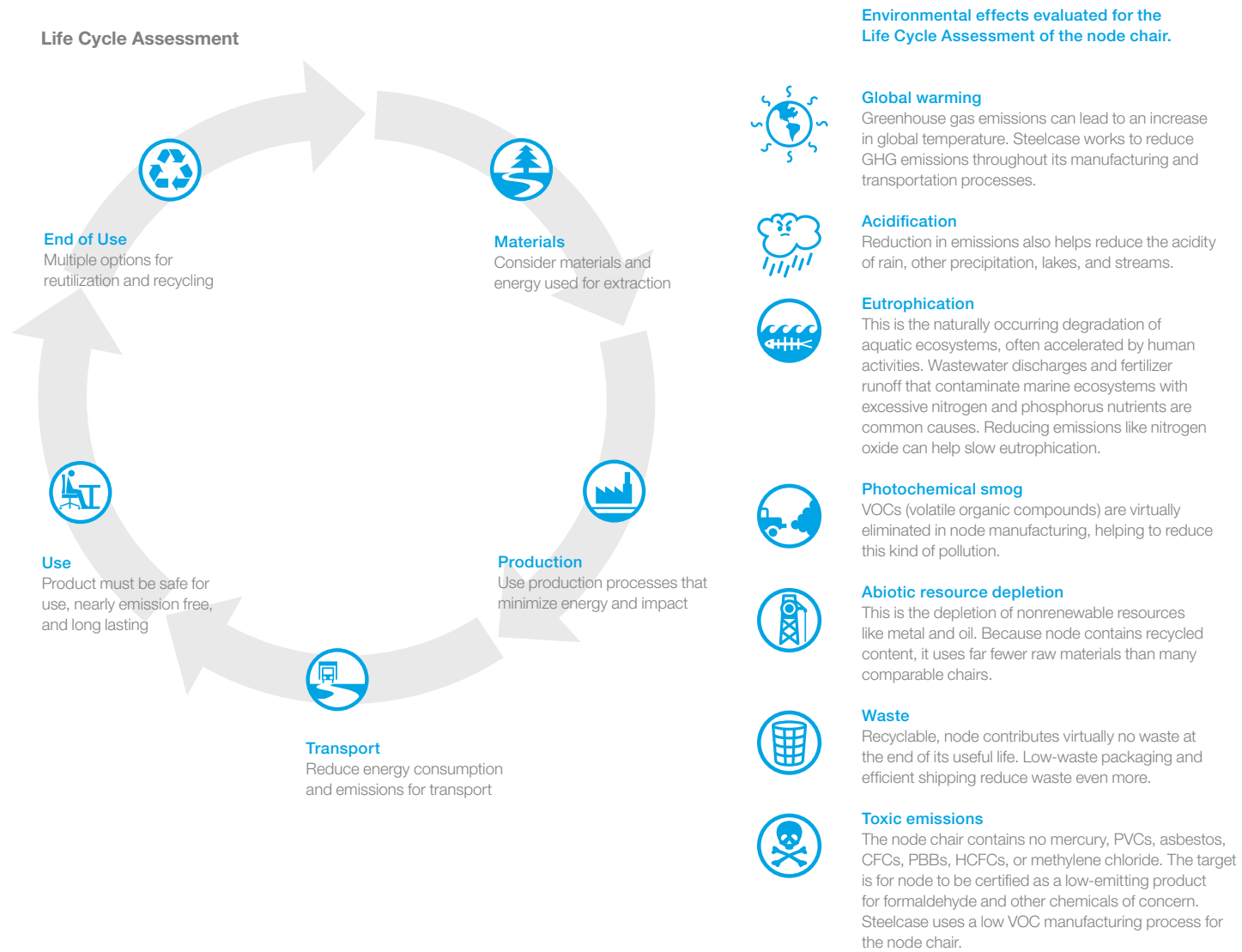
**worksurface colors**

	6249 platinum solid
	6053 seagull
	6654 sand
	6337 element
	6295 near black



Every stage of the node chair's life is being considered. We work with McDonough Braungart Design Chemistry (MBDC), selecting materials that are assessed safe for human and environmental health. The node chair is undergoing a complete Life Cycle Assessment, evaluating the chair's lifelong impact on the environment—from materials extraction through production, shipping, use, and end of life. The node chair is targeting several recognized sustainability certifications, including MBDC's Cradle to Cradle™ Silver certification, BIFMA's Level™ 2 certification, and Indoor Advantage™ from Scientific Certification Systems.

In addition to those certifications, node will meet applicable regulatory requirements, some being more recent regulations that focus on material selection and use, including CPSIA (Consumer Product Safety Improvement Act), REACH (Registration, Evaluation, Authorization of Chemicals) and CLP Regulation (Classification, Labeling, and Packaging), all important in making sure our product is the best choice for your students.



Whether you design them, manage them, or work in them, we can help you create high performance, sustainable work environments. We study how work gets done and how great spaces can help. Those insights are embedded into every product and service we offer. Our interior architecture, furniture, and technology solutions help organizations build their business, reflect their brand, and support their culture.

We're unique from everyone else in our industry, in that we offer products and services founded in a research methodology that focuses on the user, and how they really work.

We are committed to maintaining our leadership role in terms of sustainable responsibility, and we are equally committed to the customers and designers we work with. Our job is to make your job easier. Our passion is helping you Love How You Work®.

### Global Dealer Network

With a network of over 800 experienced dealers, we can help you create high performance, sustainable workspaces, anywhere in the world. Our network offers you local expertise with global reach. Whether your project is across town, across the country, or across the ocean, our dealer network will coordinate the logistics so you don't have to. It's local expertise with a global reach.

### Steelcase and Dealer Services

Our extensive range of services can help you with all of the phases through which a high-performance environment evolves through: Measure. Explore. Plan. Provide. Manage.

Measure—helping you know if your workplace is keeping pace.

Explore—helping you link your business goals with the best workplace strategy.

Plan—helping you find a solution that addresses your needs.

Provide—helping you every step of the way, from project management to move management.

Manage—helping you maintain an effective space for today and tomorrow.

### Warranty

Steelcase and your Steelcase Dealer are totally committed to providing you a great experience and great products. We back that up with one of the industry's best warranties and a problem resolution process that ensure that any problems that arise get addressed quickly.

 **As part of our commitment to sustainability, this brochure was created using an on-demand printing process, enabling us to digitally print materials only when necessary.**

**For high resolution images of these products and more, contact your local workplace consultant or dealer representative.**



Call 800.333.9939 or visit [steelcase.com](http://steelcase.com)

Item #: 10-0002811 5/10 ©2010 Steelcase Inc. All rights reserved. All specifications subject to change without notice. Printed in U.S.A. "Believe it or not," a full-sized Greatest American Hero lunchbox fits comfortably in the base of node.