



Converge™

Gunlocke®
Performance in Wood.



Discover

BRING PEOPLE AND TECHNOLOGY TOGETHER SEAMLESSLY WITH INTEGRATED,
CUSTOMIZABLE CONNECTIVITY FOR CONFERENCING ENVIRONMENTS.
CONVERGE DELIVERS WHAT BUSINESSES HAVE BEEN WAITING FOR:

A Complete Conferencing Solution.

Connect



Scalable, connected conferencing.

TECHNOLOGY PORTS PROVIDE A CLOSE-AT-HAND RESOURCE FOR BASIC CONNECTIVITY; FOR MORE INTENSIVE TECHNOLOGY NEEDS, A TROUGH OFFERS MAXIMUM CONNECTIVITY AND STORAGE FOR ALL YOUR EQUIPMENT. WITH EITHER OPTION, CONVERGE CONFERRING CAN BE CUSTOMIZED TO INDIVIDUAL REQUIREMENTS.



Collaborate



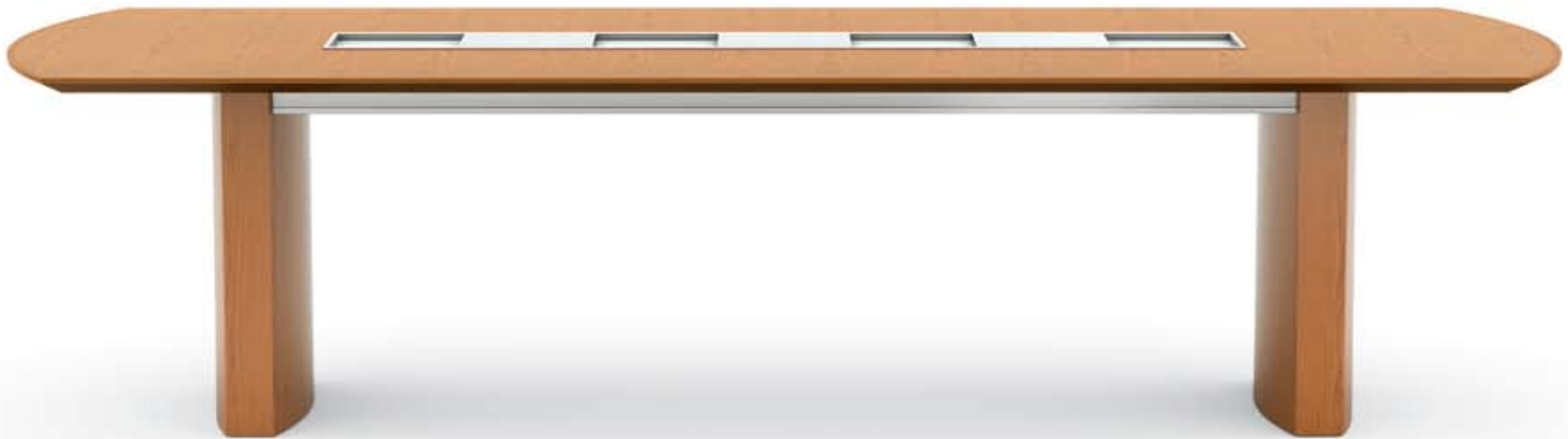


LEG BASE

The power of collective thought.

CONVERGE IS INTUITIVE TO USE AND OFFERS A CLEAN FINISH. BY MAKING TECHNOLOGY INTEGRAL TO THE TABLE, CONVERGE ELIMINATES VISUAL AND PHYSICAL OBSTRUCTIONS AND IMPROVES THE FREE FLOW AND EXCHANGE OF IDEAS. THE DOORS ON CONVERGE'S TECHNOLOGY PORTS AND TROUGHS REMAIN FLUSH WITH THE TABLE TOP, ALLOWING ONLY AS MANY CABLES AS ARE REQUIRED, WHILE CONCEALING PLUGS AND JACKS.

Converge



The ideal conferencing solution.

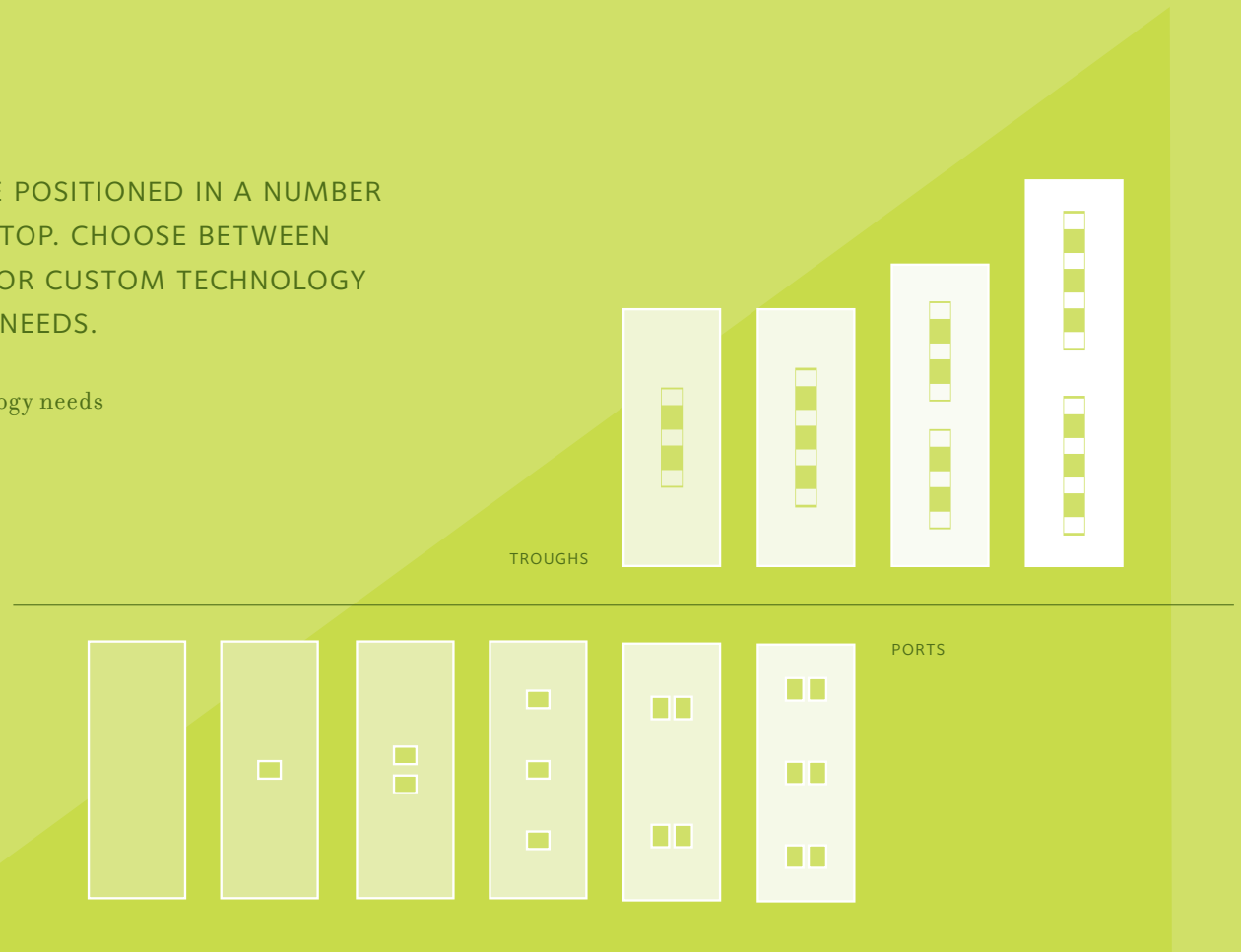
SIX STANDARD SHAPES, THREE BASE STYLES, FOUR STANDARD WOOD SPECIES AND MORE THAN A DOZEN FINISHES GIVE YOU TOTAL AESTHETIC FREEDOM TO CREATE ANY DESIGN STYLE, FROM CONSERVATIVE TO CONTEMPORARY.



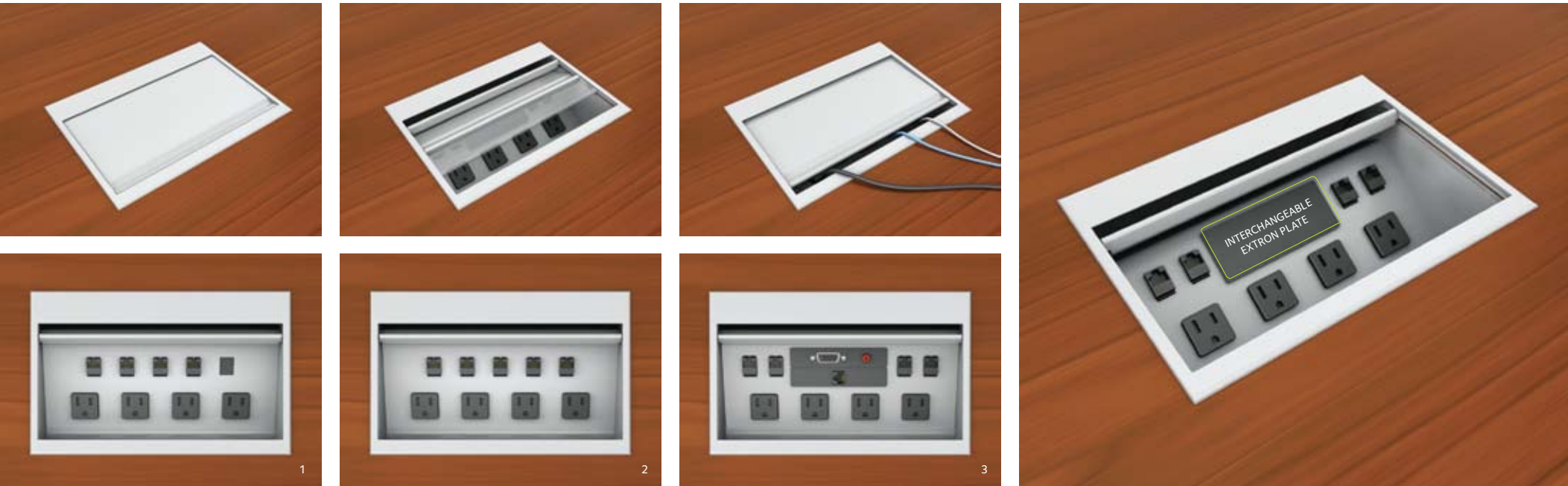
Connectivity

TECHNOLOGY PORTS AND TROUGHS CAN BE POSITIONED IN A NUMBER OF CONVENIENT LOCATIONS ON THE TABLE TOP. CHOOSE BETWEEN PRE-CONFIGURED CONNECTIVITY OPTIONS OR CUSTOM TECHNOLOGY SELECTIONS THAT ADDRESS YOUR SPECIFIC NEEDS.

Converge tables adapt to today's and tomorrow's technology needs with extensive connectivity choices that are compatible with all major A/V component suppliers



Ports



CONCEALABILITY

- All port and trough doors slide open, remaining flush with the table top, concealing plugs and jacks, while allowing access to cables and cords
- When ports are not in use, port doors slide completely closed

SIMPLE SPECIFICATION

- The specification process is simplified with three preconfigured ports: (1) data/power, (2) data/power/voice, and (3) VGA/Audio. These selections accommodate 90% of power and data needs in most conference rooms
- Choose power in standard plug or hardwire connection

COMPATIBILITY

- Interchangeable jack cutouts accommodate a variety of manufacturers and technology applications. (Leviton, Allen Tel. Amp, Panduit, Siemon)

FUTURE CAPABILITY

- An Extron panel offers complete flexibility and the widest range of connectivity options (shown above right)
- The technology interface can be easily updated as needs change by simply replacing the Extron plate, ensuring your conference room investment will remain relevant

Troughs



STORAGE

- Store power cords, small LCD projectors and speaker/conference phones inside the trough, where they are hidden from view

CONCEALABILITY

- Power and data connections are concealed beneath sliding access doors that remain flush with the table top when open or closed to eliminate visual and physical obstructions during meetings

EASE OF INSTALLATION

- Innovative, 'top-on-last' construction speeds the installation of connectivity choices
- Table top changes easily to give the conference room a completely new look at a fraction of the cost of purchasing new furniture

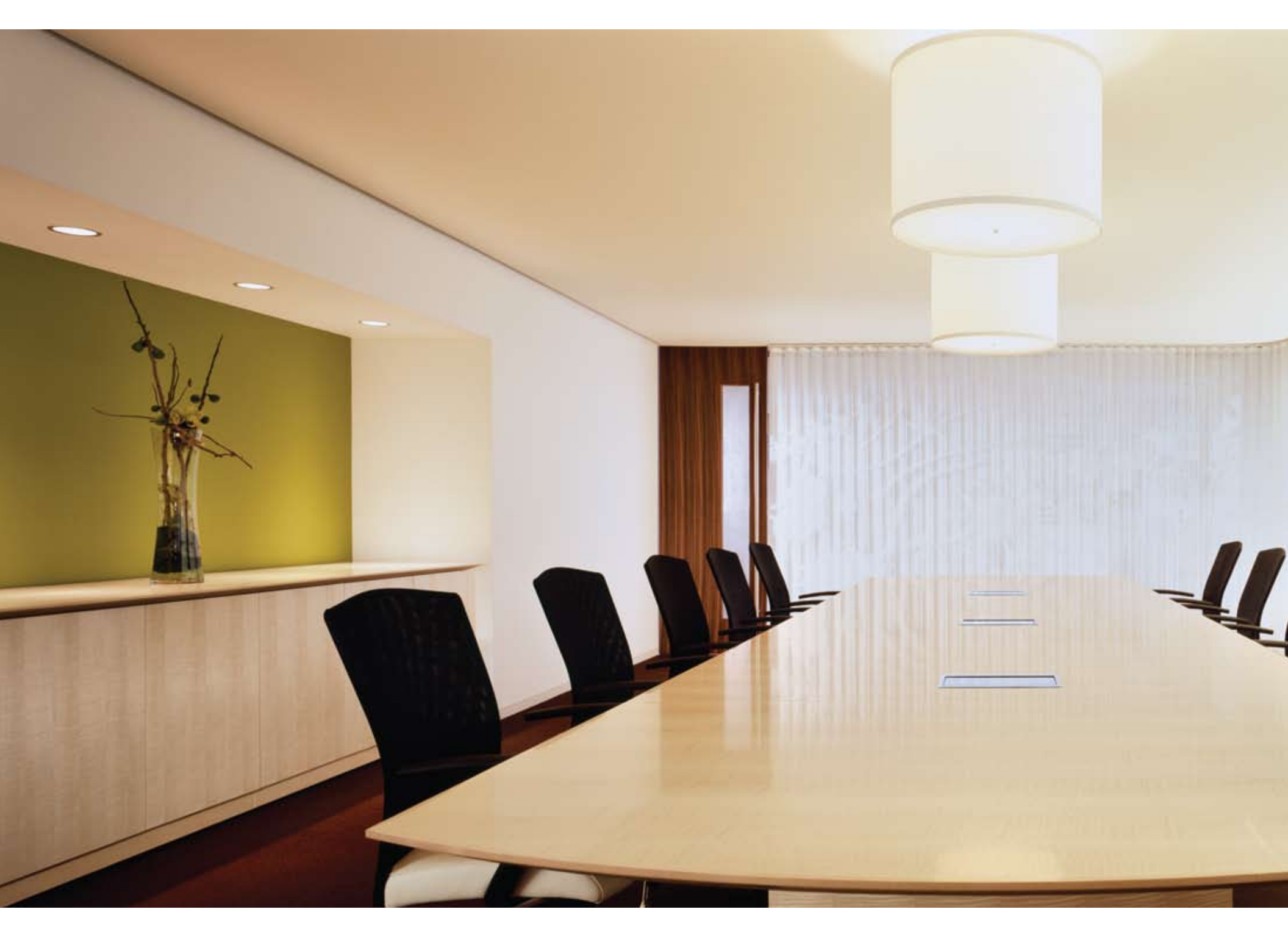




Wire Management

- Every base style offers streamlined power routing from floor monument to the table
- Use a wire spine to route cables from floor to underside of tables with legs (shown left)
- Standard, removable wire management panels (shown center, right) offer convenient access and ample storage for wires and equipment on tables with panel and geo bases
- Wire manager conceals electrical and data wires beneath the table top, eliminating visual clutter





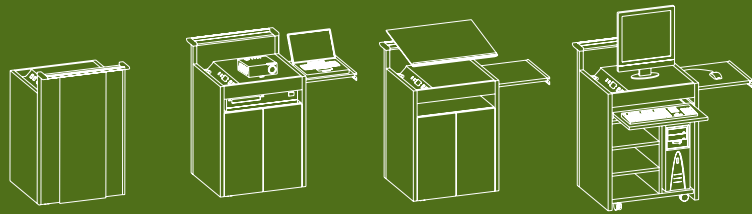
TODAY'S CONFERENCE ROOM IS MORE THAN JUST A TABLE; IT'S A COLLECTION OF INTEGRATED ELEMENTS DESIGNED TO ENCOURAGE COLLABORATION AND INSPIRE SOLUTIONS.

An Easier Way to Connect and Collaborate



Elegant, Versatile and Intuitive.

THE CONVERGE MOBILE TECHNOLOGY CART GIVES ANY MEETING ROOM MULTIFUNCTIONAL CAPABILITY, EASY ACCESS AND CENTRALIZED STORAGE FOR AUDIO/VISUAL AND INFORMATION TECHNOLOGY EQUIPMENT AND SUPPLIES.



Technology Cart



Multifunctional

FEATURES

- Concealed casters and aluminum handle make it effortless to move the cart from room to room as needed
- Technology tray on top of unit provides immediate access to electrical, data and communication outlets
- Accessory slide-out shelf has a soft self closing feature

LECTERN (CVMTC-KM)

- A/V rack accommodates 14" of standard racking equipment
- Tilt- and height-adjustable top surface incorporates a pencil lip on bottom edge to hold documents

PC CART (CVMTC-PC)

- Bottom cabinet is sectioned for CPU and miscellaneous storage
- Keyboard tray is retractable

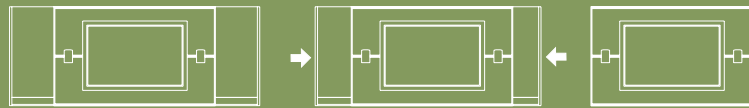
PRESENTATION CART (CVMTC-LD)

- A/V rack accommodates 14" of standard racking equipment



Dynamic Visual Performance.

NOW YOU CAN HAVE A WALL-MOUNTED TELEVISION SCREEN ALONG WITH INTEGRATED SHELVING FOR DVD PLAYERS AND VIDEO CONFERENCING CAMERAS, SPEAKER CLIPS AND EXTENDABLE WHITEBOARDS, ALL IN A SINGLE, FLEXIBLE UNIT THAT LETS YOU ENGAGE THE AUDIENCE AND SHARE YOUR MESSAGE, LOCALLY AND GLOBALLY.



Visual Display Center



Versatility

FEATURES

- Visual display center provides multifunctional communication and visual presentation capabilities for wall-mounted LCD or Plasma TVs
- Standard size fits 42" to 60" LCD or Plasma TVs
- All wood or aluminum segmented versions available for design flexibility
- Optional, extending 24" whiteboards facilitate note taking
- Aluminum rails accommodate clip in accessory shelves and speaker mounts for additional technology requirements or accent displays
- Three shelf options are sized for laptop, DVD, video camera, speakers and conference accessories

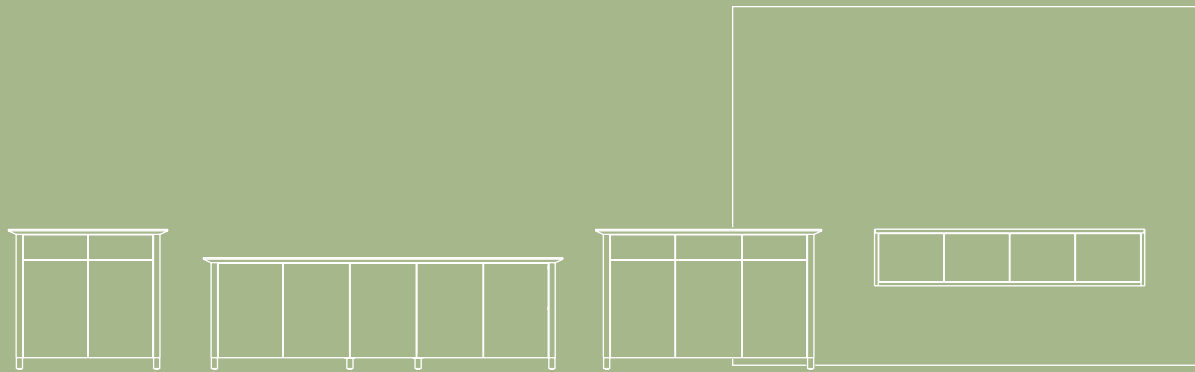
WHITEBOARD

- Designed and scaled for executive conference environments
- Writing surface extends past the frame for easy wipe off, eliminating the marker dust build-up found in framed whiteboards
- Aluminum marker tray
- Magnetic surface



Attractive and efficient storage.

FREESTANDING CREDENZAS ARE AVAILABLE IN TWO HEIGHTS AND SEVERAL LENGTHS TO MEET A VARIETY OF STORAGE NEEDS. WALL MOUNTED CREDENZAS ACCOMMODATE THE FULL RANGE OF SPACE AND BUDGETARY REQUIREMENTS.



Credenzas



Complementary



FEATURES

- Available in two heights 29" standard and 37" buffet
- Available in four standard widths 2, 3, 4 and 5-door
- Twenty-four inch credenza depth accommodates a variety of storage needs from hospitality supplies to audiovisual equipment

- Credenzas are available with straight or bowed ends to complement table top shapes
- Nine edge profiles
- Three hardware choices
- Standard maple, cherry, oak and walnut veneers
- Four exotic veneers
- Thirteen finishes

A/V STORAGE

- Efficient A/V racking system is available as a standard option
- Edge detail accommodates standard plasma screen mounting brackets
- Optional back panel cutouts offer cooling and ventilation for equipment and easy access for managing wires and integrating technology



Practical service.

THE HOSPITALITY CART OFFERS AN ELEGANT, EASY WAY TO PROVIDE AND REMOVE FOOD SERVICE ITEMS DURING A MEETING. THE SOPHISTICATED, PRACTICAL DESIGN ALLOWS THE CART TO FIT SEAMLESSLY WITH CONVERGE CONFERENCE ROOM TABLES.



Hospitality Cart

FEATURES

- Durable, solid, easy to clean surface for serving beverages and food. (Standard Formica solid surface Natural Concrete 603)
- Custom stone, granite or other solid surface can be ordered locally and installed on site
- Lockable casters and handle for easy mobility
- Storage can be configured open or as drawers

TELEPHONE STAND (shown bottom left)

- Ideal for smaller conference rooms with limited space
- Drawer and shelf or full door versions available

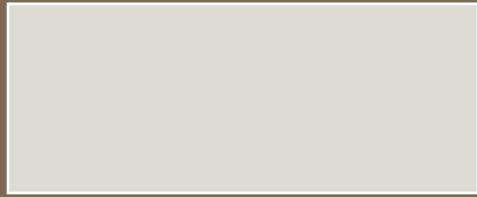




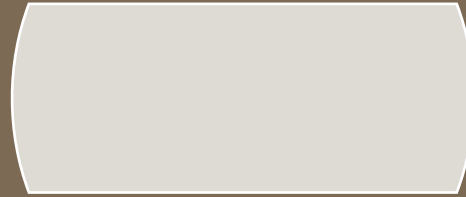
Choices

CONVERGE COMBINES COMPELLING LEAD TIMES WITH STUNNING CRAFTSMANSHIP AND EXCEPTIONAL PERFORMANCE. GUNLOCKE'S DURABLE CLEARTECH® FINISH ENSURES LASTING BEAUTY; SIX STANDARD SHAPES AND NINE EDGE PROFILES ENHANCE CONVERGE'S ADAPTABILITY TO ANY INTERIOR DESIGN.

Table Top Shapes



RECTANGLE



ARC END



QUAD ARC



ARC BOAT

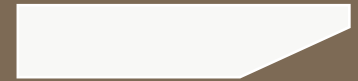


SIGHT LINE

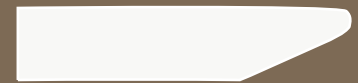


ROUND

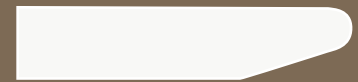
Edge Details



KNIFE



TAPER



ERGO



Veneer | Finish

- A Medium Brown Cherry
- B Cinnamon Cherry
- C Espresso Cherry
- D Dark Red Cherry
- E Medium Red Cherry
- F Light Cherry
- G Burnished Cherry
- H Natural Maple
- I Honey Maple
- J Dark Rift Oak
- K Medium Rift Oak
- L Medium Brown Walnut
- M Cinnamon Walnut

Exotic Veneer

- N Birdseye Maple
- O Figured Sycamore
- P Ribbon Sapele
- Q Figured Anegre

Metal Finish

- R Aluminum

Hospitality Cart Top

- S Natural Concrete

Pulls

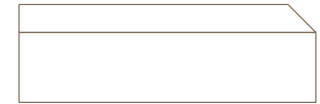
- 1 Modern
- 2 Metro
- 3 Classic



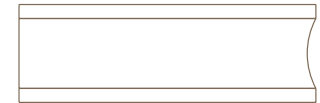
SOFTENED



RADIUS



BEVEL



LACUNA



TRIOVAL



DOUBLE FLUTE

Companion Edge Details

(from Medley™)







Linking people, places and ideas.

CONVERGE BRINGS TOGETHER CLEAN LINES, THE FINEST VENEERS AND ENDURING QUALITY WITH UNIQUE TECHNOLOGY SOLUTIONS. IT'S THE ELEGANTLY SIMPLE ANSWER TO THE COMPLEX CHALLENGES OF LINKING PEOPLE, PLACES AND IDEAS.

CONVERGE™ AWARDS

BEST OF NEOCON 2007

GOLD Tables: Conference

SILVER Casegoods: Conference Room

WWW.GUNLOCKE.COM

The Gunlocke Company, LLC

One Gunlocke Drive, Wayland, NY 14572

800 828 6300 F 585 728 8350

Gunlocke®
Performance in Wood.

CONVERGE092007