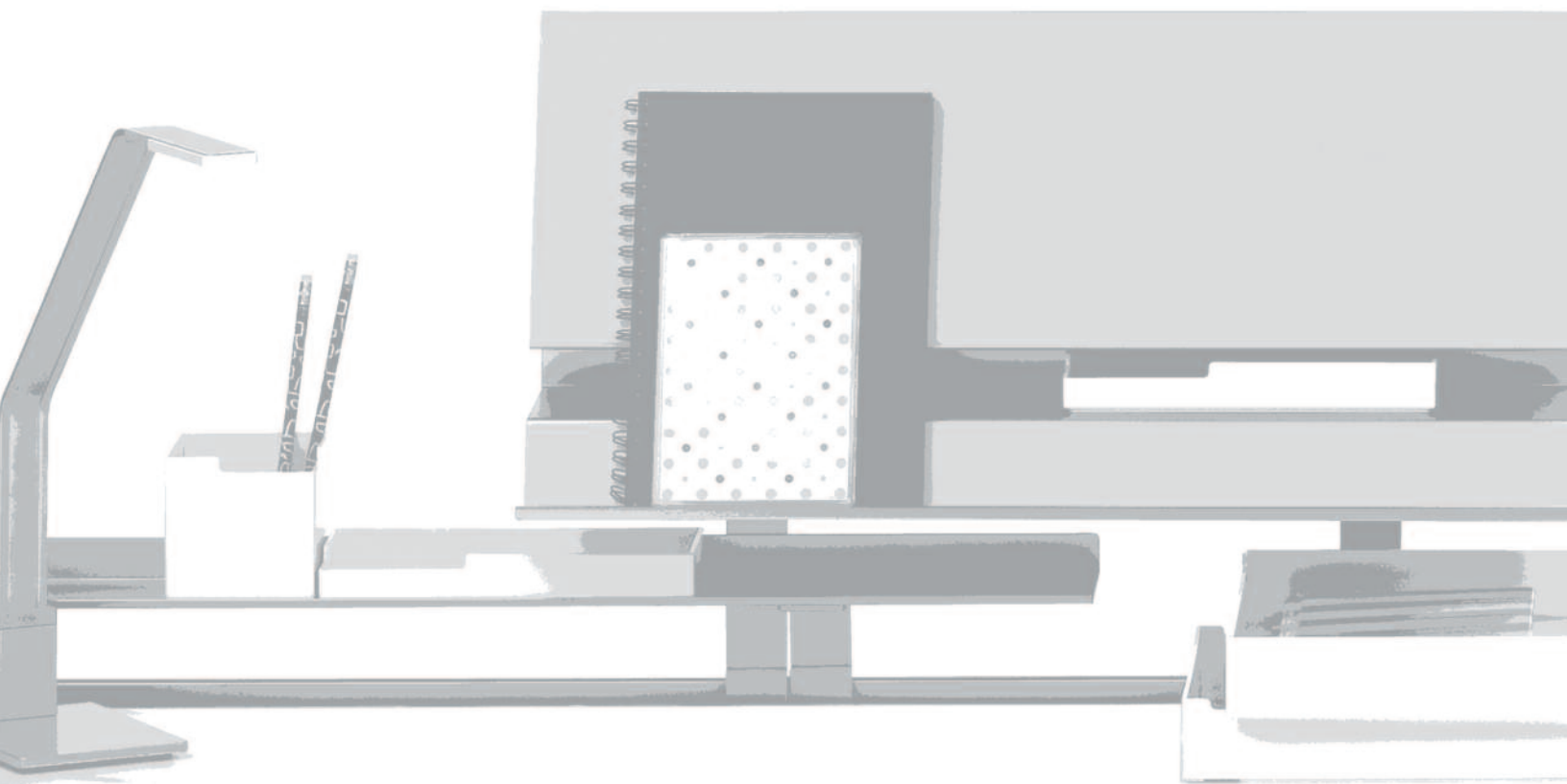




organizational worktools

Organizational logic
and ergonomic well-being.



A Steelcase Company

details

space

to work in is one thing.



Details delivers that “something else.” Again and again.

Details doesn't expect individuals to adjust to the workspace. We design workspace that instantly adjusts to ever-changing individuals. And to the many ways they work. Look to Details to provide ergonomic sensibility, to help manage clutter, to organize information and to improve productivity.

But space that really works is something else.



three

basic ways to give people control and to make the workspace really work.



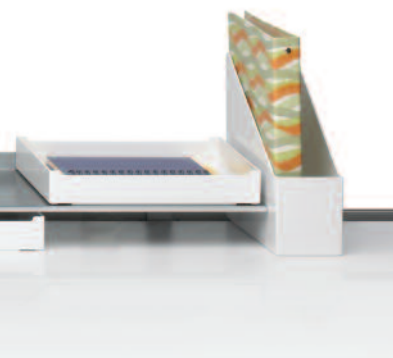
Slatwall



SlatRail

SOTO™





Expansive thinking expands the precious commodity of workspace. Regardless the application, Organizational Worktools help people easily do more in less... less space and less time. The worktools you see here help create organizational logic and ergonomic well-being in a world of faster, sooner, more.

soto™

a stylish and contemporary worktool collection exclusively created for freestanding applications including the Details height-adjustable table line and the rail architecture of Steelcase c:scape™ furniture.



SOTO™

STATE OF THE OFFICE

Tools that help the workplace and its workers come together.
Based on research about the ways people work.
Minimizes visual clutter. And oh so sustainable.
Proof of the time-honored truism: the whole is greater than the sum of the parts.



maximize space

merge aesthetics with function to help maximize your investments in people and furniture.



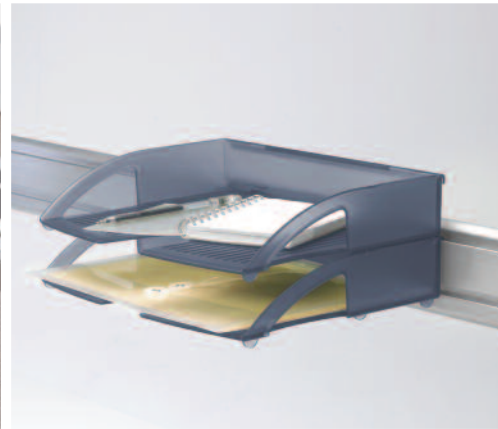
Pencil Cup and Mini-Shelf on Slatwall



Flat Top™ Hanger



Pelican Pencil Drawer



Landscape Letter Trays on SlatRail



SOTO Display Shelf, Utility Box, Personal Box, Tool Box, 10" Shelf and 3" Shelf on SOTO Rail



Telephone Caddy on Slatwall



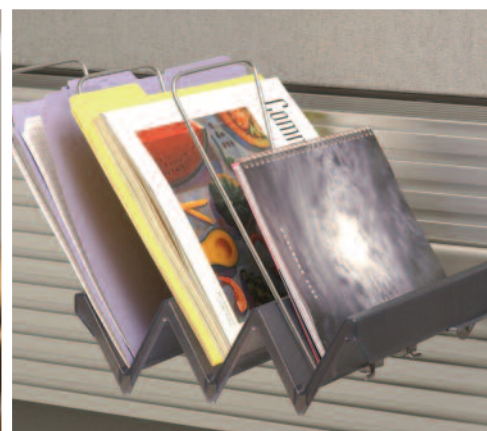
SOTO Personal Boxes and Pile Box



SOTO Pile Boxes and 10" Shelf on SOTO Rail



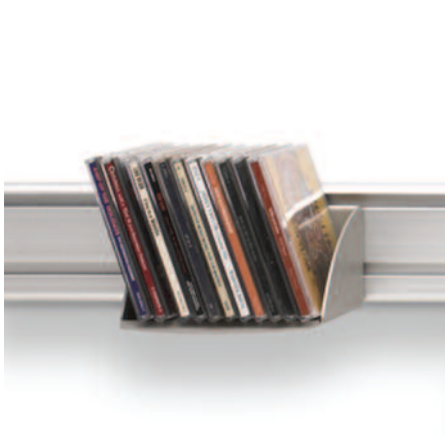
Personal Shelf on Slatwall



PaperFlo® Manager on Slatwall



Freestanding Letter Trays



Media Holder on SlatRail



SOTO Tool Box and Utility Box with 3" Shelf on SOTO Rail

data-bits:

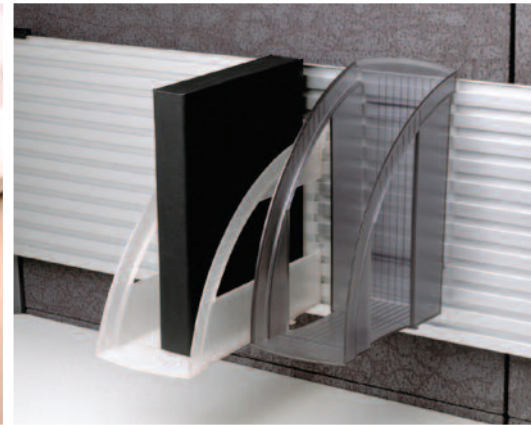
- 15% of all paper handled in businesses is lost, and 30% of all employees' time is spent trying to find lost documents.



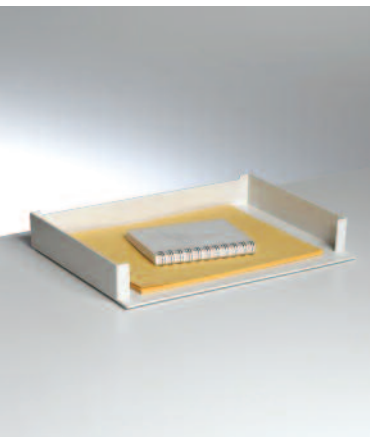
SOTO Pile Boxes and 10" Shelf on SOTO Rail



Double Square Dish on Slatwall



Binder Holders on Slatwall



SOTO Landscape Letter Box



Hanging Brackets and Office in a File on Slatwall



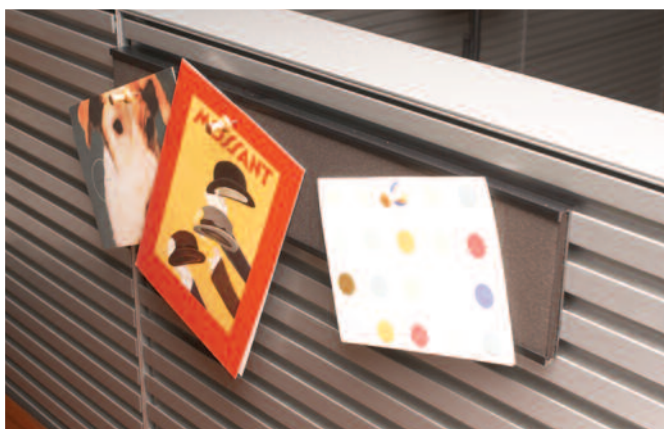
SOTO LED Light Rail Mounted on c:scape and 3" Shelf



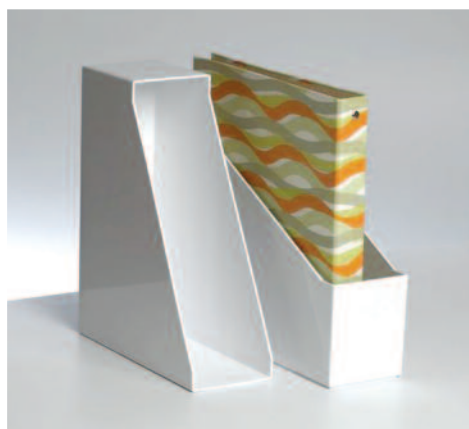
File Container and Letter Trays

more data-bits:

- It has been shown that a company employing 1,000 workers wastes \$48,000 per week or nearly \$2.5 million per year, due to an inability to locate and retrieve information.
- 71% of white-collar workers feel stressed about the amount of information they must process and act on while doing business.



Tackstrip on Slatwall



SOTO Freestanding Diagonal File Boxes



SOTO Rail



Wastebaskets and Recycling Labels



Slatshelf with Dividers, Pencil Cup and Cable Spool on Slatwall



SOTO Cableway and SOTO Rail



Organizational Worktools
Organizational logic
and ergonomic well-being.

For further information, please go to the Details website www.details-worktools.com or call 800.833.0411

P.O. Box 1967 / CD-5E Grand Rapids, MI 49501-1967

©2009 Office Details Inc. All rights reserved. Printed in the U.S.A. on 30% PC recycled paper. 5k 09-0000541 05/09



For a better day at work.®



A Steelcase Company